

PIPE FITTINGS

We carry one of the largest inventories of pipe fittings and flanges in both carbon and stainless in the USA.



CARBON STEEL FLANGES

- Available in Sizes 1/2" – 48"
- 150# – 2500#
- Galvanized Flanges
- Import, Approved & Domestic



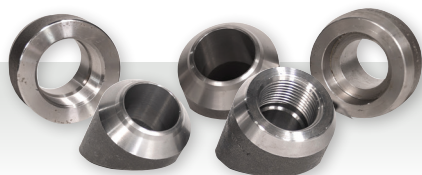
CARBON STEEL WELD FITTINGS

- Available in Sizes 1/2" – 48"
- Schedule 20 – XXH
- Import, Approved & Domestic



FORGED STEEL FITTINGS

- Available in Sizes 1/8" – 4"
- 2000#, 3000#, 6000#
- Orifice Unions
- Import & Domestic



FORGED STEEL OUTLETS

- Available in Sizes 1/2" – 12"
- Standard & XH, 3000# & 6000#
- Butt Weld, Threaded & SW
- Elbow & Lateral
- Import & Domestic



CI/DI FLANGED FITTINGS & FLANGES

- Available in Sizes 2" – 16"
- 125# – 250#

Call
1-800-325-7820
for a quick quote or
send your inquiry to
sales@servicemetal.net



MALLEABLE IRON PIPE FITTINGS

- Available in Sizes 1/8" – 8"
- 150# – 300#
- Black & Galvanized



STEEL PIPE NIPPLES

- Available in Sizes 1/8" – 8" to Any Length
- Black & Galvanized
- Standard – XXH
- Welded & Seamless
- Import & Domestic Seamless



MERCHANT STEEL FITTINGS

- Available in Sizes 1/8" – 6"
- Black & Galvanized
- Couplings, Bushings & Plugs
- XH API Coupling Available in Sizes 1/4" – 10"



STAINLESS STEEL FITTINGS & PIPE NIPPLES

- Available in Sizes 1/8" – 4"
- 150# Threaded & SW
- Standard Pattern & MSS SP-114 Pattern Available
- 304SS & 316SS
- Sch 40 Welded Nipples
- Sch 80 Seamless Nipples



BOLT PAKS

- Available in Sizes 1/2" – 24"
- 150# – 300#
- Grade 2 Bolts with Heavy Hex Nuts



TANK FLANGES

DOUBLE TAPPED BUSHINGS

MUSHROOM VENT CAPS