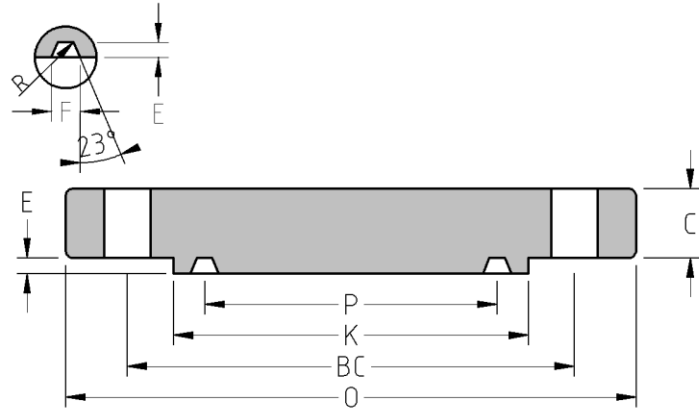




RTJ Blind Flange  
**CLASS 900**  
Inches / Pounds



Nominal Pipe Size	Outside Diam. of Flange (O)	Thick. of Flange (C)	Min. Dia. of Raised (K)	Groove number	Pitch Dia. (P)	Depth (E)	Width (F)	Radius at Bottom	No. of Holes	Diam. of Holes (DH)	Diam. of Bolts	Diam. of Bolt Circle (BC)	Approx. Weight (in Pounds)
1/2	<b>USE <u>CLASS 1500</u> DIMENSIONS IN THESE SIZES</b>												
3/4													
1													
1 1/4													
1 1/2													
2													
2 1/2													
3	9.50	1.50	6.12	R-31	4.875	0.312	0.469	0.03	8	1.00	0.88	7.50	31
4	11.50	1.75	7.12	R-37	5.875	0.312	0.469	0.03	8	1.25	1.12	9.25	56
5	13.75	2.00	8.50	R-41	7.125	0.312	0.469	0.03	8	1.38	1.25	11.00	90
6	15.00	2.19	9.50	R-45	8.312	0.312	0.469	0.03	12	1.25	1.12	12.50	118
8	18.50	2.50	12.12	R-49	10.625	0.312	0.469	0.03	12	1.50	1.38	15.50	205
10	21.50	2.75	14.25	R-53	12.750	0.312	0.469	0.03	16	1.50	1.38	18.50	296
12	24.00	3.12	16.50	R-57	15.000	0.312	0.469	0.03	20	1.50	1.38	21.00	422
14	25.25	3.38	18.38	R-62	16.500	0.438	0.656	0.06	20	1.62	1.50	22.00	544
16	27.75	3.50	20.62	R-66	18.500	0.438	0.656	0.06	20	1.75	1.62	24.25	629
18	31.00	4.00	23.38	R-70	21.000	0.5	0.781	0.06	20	2.00	1.88	27.00	901
20	33.75	4.25	25.50	R-74	23.000	0.5	0.781	0.06	20	2.12	2.00	29.50	1,132
24	41.00	5.50	30.38	R-78	27.250	0.625	1.062	0.09	20	2.62	2.50	35.50	2,144

**\* Dimensions conform to ASTM A/SA-105N; ASME B16.5**