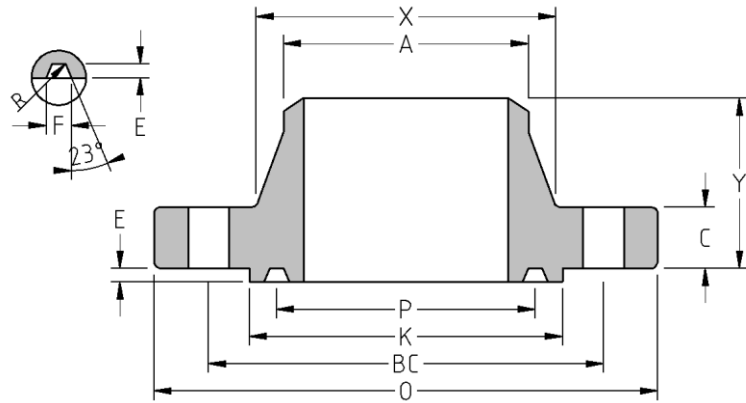




RTJ Weld Neck  
Flange  
**CLASS 600**  
Inches / Pounds



Nominal Pipe Size	Outside Diam. of Flange (O)	Thick. of Flange (C)	Min. Dia. of Raised (K)	Diam. of Hub at Base (X)	Diam. of Hub at Point of Welding (A)	Length thru Hub (Y)	Groove number	Pitch Dia. (P)	Depth (E)	Width (F)	Radius at Bottom	No. of Holes	Diam. of Holes (DH)	Diam. of Bolts	Diam. of Bolt Circle (BC)	Approx. Weight (in Pounds)
1/2	3.75	0.56	2.00	1.50	0.84	2.06	R-11	1.344	0.219	0.281	0.03	4	0.62	0.50	2.62	2
3/4	4.62	0.62	2.50	1.88	1.05	2.25	R-13	1.688	0.25	0.344	0.03	4	0.75	0.62	3.25	4
1	4.88	0.69	2.75	2.12	1.32	2.44	R-16	2.000	0.25	0.344	0.03	4	0.75	0.62	3.50	4
1 1/4	5.25	0.81	3.12	2.50	1.66	2.62	R-18	2.375	0.25	0.344	0.03	4	0.75	0.62	3.88	6
1 1/2	6.12	0.88	3.56	2.75	1.90	2.75	R-20	2.688	0.25	0.344	0.03	4	0.88	0.75	4.50	8
2	6.50	1.00	4.25	3.31	2.38	2.88	R-23	3.250	0.312	0.469	0.03	8	0.75	0.62	5.00	13
2 1/2	7.50	1.12	5.00	3.94	2.88	3.12	R-26	4.000	0.312	0.469	0.03	8	0.88	0.75	5.88	19
3	8.25	1.25	5.75	4.62	3.50	3.25	R-31	4.875	0.312	0.469	0.03	8	0.88	0.75	6.62	24
3 1/2	9.00	1.38	6.25	5.25	4.00	3.38	R-34	5.188	0.312	0.469	0.03	8	1.00	0.88	7.25	28
4	10.75	1.50	6.88	6.00	4.50	4.00	R-37	5.875	0.312	0.469	0.03	8	1.00	0.88	8.50	44
5	13.00	1.75	8.25	7.44	5.56	4.50	R-41	7.125	0.312	0.469	0.03	8	1.12	1.00	10.50	70
6	14.00	1.88	9.50	8.75	6.63	4.62	R-45	8.312	0.312	0.469	0.03	12	1.12	1.00	11.50	84
8	16.50	2.19	11.88	10.75	8.63	5.25	R-49	10.625	0.312	0.469	0.03	12	1.25	1.12	13.75	124
10	20.00	2.50	14.00	13.50	10.75	6.00	R-53	12.750	0.312	0.469	0.03	16	1.38	1.25	17.00	195
12	22.00	2.62	16.25	15.75	12.75	6.12	R-57	15.000	0.312	0.469	0.03	20	1.38	1.25	19.25	232
14	23.75	2.75	18.00	17.00	14.00	6.50	R-61	16.500	0.312	0.469	0.03	20	1.50	1.38	20.75	287
16	27.00	3.00	20.00	19.50	16.00	7.00	R-65	18.500	0.312	0.469	0.03	20	1.62	1.50	23.75	398
18	29.25	3.25	22.62	21.50	18.00	7.25	R-69	21.000	0.312	0.469	0.03	20	1.75	1.62	25.75	486
20	32.00	3.50	25.00	24.00	20.00	7.50	R-73	23.000	0.375	0.531	0.06	24	1.75	1.62	28.50	616
24	37.00	4.00	29.50	28.25	24.00	8.00	R-77	27.250	0.438	0.656	0.06	24	2.00	1.88	33.00	880

\* Dimensions conform to ASTM A/SA-105N; ASME B16.5

\* Bore to be determined at time of order.