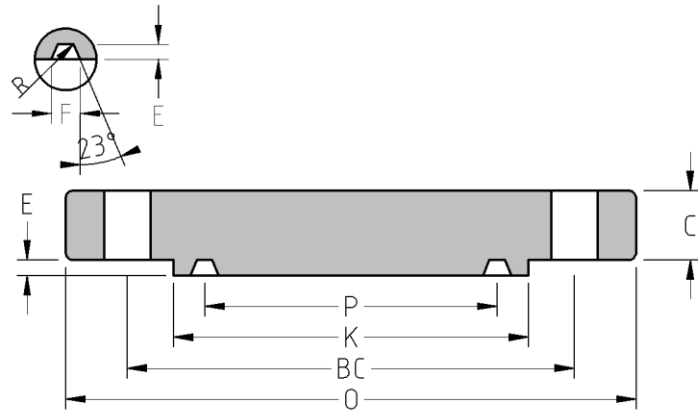




RTJ Blind Flange
CLASS 600
Inches / Pounds



Nominal Pipe Size	Outside Diam. of Flange (O)	Thick. of Flange (C)	Min. Dia. of Raised (K)	Groove number	Pitch Dia. (P)	Depth (E)	Width (F)	Radius at Bottom	No. of Holes	Diam. of Holes (DH)	Diam. of Bolts	Diam. of Bolt Circle (BC)	Approx. Weight (in Pounds)
1/2	3.75	0.56	2.00	R-11	1.344	0.219	0.281	0.03	4	0.62	0.50	2.62	2
3/4	4.62	0.62	2.50	R-13	1.688	0.25	0.344	0.03	4	0.75	0.62	3.25	3
1	4.88	0.69	2.75	R-16	2.000	0.25	0.344	0.03	4	0.75	0.62	3.50	4
1 1/4	5.25	0.81	3.12	R-18	2.375	0.25	0.344	0.03	4	0.75	0.62	3.88	5
1 1/2	6.12	0.88	3.56	R-20	2.688	0.25	0.344	0.03	4	0.88	0.75	4.50	8
2	6.50	1.00	4.25	R-23	3.250	0.312	0.469	0.03	8	0.75	0.62	5.00	11
2 1/2	7.50	1.12	5.00	R-26	4.000	0.312	0.469	0.03	8	0.88	0.75	5.88	16
3	8.25	1.25	5.75	R-31	4.875	0.312	0.469	0.03	8	0.88	0.75	6.62	21
3 1/2	9.00	1.38	6.25	R-34	5.188	0.312	0.469	0.03	8	1.00	0.88	7.25	31
4	10.75	1.50	6.88	R-37	5.875	0.312	0.469	0.03	8	1.00	0.88	8.50	43
5	13.00	1.75	8.25	R-41	7.125	0.312	0.469	0.03	8	1.12	1.00	10.50	70
6	14.00	1.88	9.50	R-45	8.312	0.312	0.469	0.03	12	1.12	1.00	11.50	89
8	16.50	2.19	11.88	R-49	10.625	0.312	0.469	0.03	12	1.25	1.12	13.75	144
10	20.00	2.50	14.00	R-53	12.750	0.312	0.469	0.03	16	1.38	1.25	17.00	235
12	22.00	2.62	16.25	R-57	15.000	0.312	0.469	0.03	20	1.38	1.25	19.25	302
14	23.75	2.75	18.00	R-61	16.500	0.312	0.469	0.03	20	1.50	1.38	20.75	362
16	27.00	3.00	20.00	R-65	18.500	0.312	0.469	0.03	20	1.62	1.50	23.75	503
18	29.25	3.25	22.62	R-69	21.000	0.312	0.469	0.03	20	1.75	1.62	25.75	641
20	32.00	3.50	25.00	R-73	23.000	0.375	0.531	0.06	24	1.75	1.62	28.50	836
24	37.00	4.00	29.50	R-77	27.250	0.438	0.656	0.06	24	2.00	1.88	33.00	1,300

* Dimensions conform to ASTM A/SA-105N; ASME B16.5