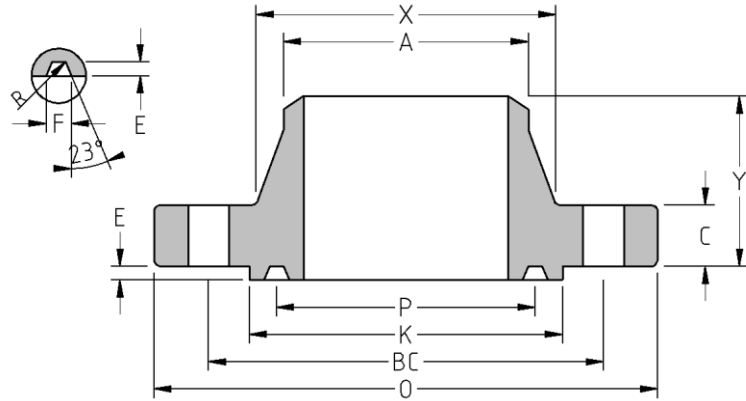




RTJ Weld Neck
Flange
CLASS 300
Inches / Pounds



Nominal Pipe Size	Outside Diam. of Flange (O)	Thick. of Flange (C)	Min. Dia. of Raised (K)	Diam. of Hub at Base (X)	Diam. of Hub at Point of Welding (A)	Length thru Hub (Y)	Groove number	Pitch Dia. (P)	Depth (E)	Width (F)	Radius at Bottom	No. of Holes	Diam. of Holes (DH)	Diam. of Bolts	Diam. of Bolt Circle (BC)	Approx. Weight (in Pounds)
1/2	3.75	0.56	2.00	1.50	0.84	2.06	R-11	1.344	0.219	0.281	0.03	4	0.62	0.50	2.62	3
3/4	4.62	0.62	2.50	1.88	1.05	2.25	R-13	1.688	0.25	0.344	0.03	4	0.75	0.62	3.25	4
1	4.88	0.69	2.75	2.12	1.32	2.44	R-16	2.000	0.25	0.344	0.03	4	0.75	0.62	3.50	5
1 1/4	5.25	0.75	3.12	2.50	1.66	2.56	R-18	2.375	0.25	0.344	0.03	4	0.75	0.62	3.88	6
1 1/2	6.12	0.81	3.56	2.75	1.90	2.69	R-20	2.688	0.25	0.344	0.03	4	0.88	0.75	4.50	9
2	6.50	0.88	4.25	3.31	2.38	2.75	R-23	3.250	0.312	0.469	0.03	8	0.75	0.62	5.00	12
2 1/2	7.50	1.00	5.00	3.94	2.88	3.00	R-26	4.000	0.312	0.469	0.03	8	0.88	0.75	5.88	16
3	8.25	1.12	5.75	4.62	3.50	3.12	R-31	4.875	0.312	0.469	0.03	8	0.88	0.75	6.62	21
3 1/2	9.00	1.19	6.25	5.25	4.00	3.19	R-34	5.188	0.312	0.469	0.03	8	0.88	0.75	7.25	24
4	10.00	1.25	6.88	5.75	4.50	3.38	R-37	5.875	0.312	0.469	0.03	8	0.88	0.75	7.88	32
5	11.00	1.38	8.25	7.00	5.56	3.88	R-41	7.125	0.312	0.469	0.03	8	0.88	0.75	9.25	42
6	12.50	1.44	9.50	8.12	6.63	3.88	R-45	8.312	0.312	0.469	0.03	12	0.88	0.75	10.62	54
8	15.00	1.62	11.88	10.25	8.63	4.38	R-49	10.625	0.312	0.469	0.03	12	1.00	0.88	13.00	85
10	17.50	1.88	14.00	12.62	10.75	4.62	R-53	12.750	0.312	0.469	0.03	16	1.12	1.00	15.25	113
12	20.50	2.00	16.25	14.75	12.75	5.12	R-57	15.000	0.312	0.469	0.03	16	1.25	1.12	17.75	168
14	23.00	2.12	18.00	16.75	14.00	5.62	R-61	16.500	0.312	0.469	0.03	20	1.25	1.12	20.25	209
16	25.50	2.25	20.00	19.00	16.00	5.75	R-65	18.500	0.312	0.469	0.03	20	1.38	1.25	22.50	283
18	28.00	2.38	22.62	21.00	18.00	6.25	R-69	21.000	0.312	0.469	0.03	24	1.38	1.25	24.75	363
20	30.50	2.50	25.00	23.12	20.00	6.38	R-73	23.000	0.375	0.531	0.06	24	1.38	1.25	27.00	465
24	36.00	2.75	29.50	27.62	24.00	6.62	R-77	27.250	0.438	0.656	0.06	24	1.62	1.50	32.00	681

* Dimensions conform to ASTM A/SA-105; ASME B16.5

* Bore to be determined at time of order.