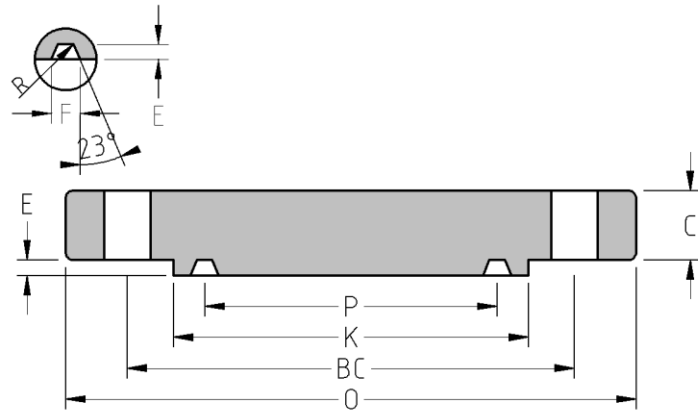




RTJ Blind Flange
CLASS 300
Inches / Pounds



Nominal Pipe Size	Outside Diam. of Flange (O)	Thick. of Flange (C)	Min. Dia. of Raised (K)	Groove number	Pitch Dia. (P)	Depth (E)	Width (F)	Radius at Bottom	No. of Holes	Diam. of Holes (DH)	Diam. of Bolts	Diam. of Bolt Circle (BC)	Approx. Weight (in Pounds)
1/2	3.75	0.56	2.00	R-11	1.344	0.219	0.281	0.03	4	0.62	0.50	2.62	3
3/4	4.62	0.62	2.50	R-13	1.688	0.25	0.344	0.03	4	0.75	0.62	3.25	4
1	4.88	0.69	2.75	R-16	2.000	0.25	0.344	0.03	4	0.75	0.62	3.50	4
1 1/4	5.25	0.75	3.12	R-18	2.375	0.25	0.344	0.03	4	0.75	0.62	3.88	5
1 1/2	6.12	0.81	3.56	R-20	2.688	0.25	0.344	0.03	4	0.88	0.75	4.50	8
2	6.50	0.88	4.25	R-23	3.250	0.312	0.469	0.03	8	0.75	0.62	5.00	11
2 1/2	7.50	1.00	5.00	R-26	4.000	0.312	0.469	0.03	8	0.88	0.75	5.88	16
3	8.25	1.12	5.75	R-31	4.875	0.312	0.469	0.03	8	0.88	0.75	6.62	22
3 1/2	9.00	1.19	6.25	R-34	5.188	0.312	0.469	0.03	8	0.88	0.75	7.25	27
4	10.00	1.25	6.88	R-37	5.875	0.312	0.469	0.03	8	0.88	0.75	7.88	34
5	11.00	1.38	8.25	R-41	7.125	0.312	0.469	0.03	8	0.88	0.75	9.25	45
6	12.50	1.44	9.50	R-45	8.312	0.312	0.469	0.03	12	0.88	0.75	10.62	62
8	15.00	1.62	11.88	R-49	10.625	0.312	0.469	0.03	12	1.00	0.88	13.00	99
10	17.50	1.88	14.00	R-53	12.750	0.312	0.469	0.03	16	1.12	1.00	15.25	146
12	20.50	2.00	16.25	R-57	15.000	0.312	0.469	0.03	16	1.25	1.12	17.75	213
14	23.00	2.12	18.00	R-61	16.500	0.312	0.469	0.03	20	1.25	1.12	20.25	279
16	25.50	2.25	20.00	R-65	18.500	0.312	0.469	0.03	20	1.38	1.25	22.50	328
18	28.00	2.38	22.62	R-69	21.000	0.312	0.469	0.03	24	1.38	1.25	24.75	438
20	30.50	2.50	25.00	R-73	23.000	0.375	0.531	0.06	24	1.38	1.25	27.00	570
24	36.00	2.75	29.50	R-77	27.250	0.438	0.656	0.06	24	1.62	1.50	32.00	891

* Dimensions conform to ASTM A/SA-105; ASME B16.5