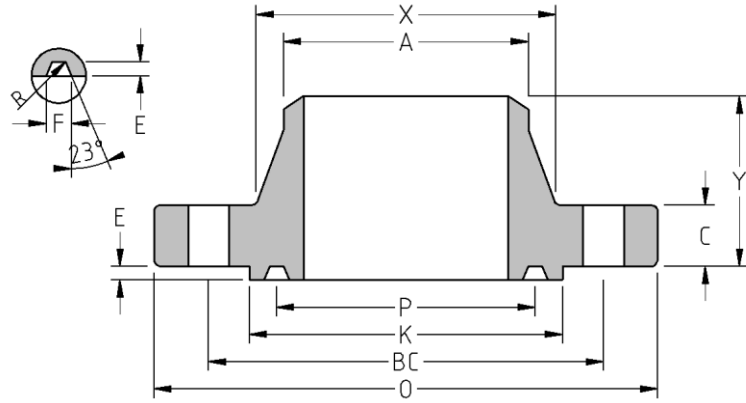




RTJ Weld Neck
Flange
CLASS 2500
Inches / Pounds



Nominal Pipe Size	Outside Diam. of Flange (O)	Thick. of Flange (C)	Min. Dia. of Raised (K)	Diam. of Hub at Base (X)	Diam. of Hub at Point of Welding (A)	Length thru Hub (Y)	Groove number	Pitch Dia. (P)	Depth (E)	Width (F)	Radius at Bottom	No. of Holes	Diam. of Holes (DH)	Diam. of Bolts	Diam. of Bolt Circle (BC)	Approx. Weight (in Pounds)
1/2	5.25	1.19	2.56	1.69	0.84	2.88	R-13	1.688	0.25	0.344	0.03	4	0.88	3/4	3.50	7
3/4	5.50	1.25	2.88	2	1.05	3.12	R-16	2.000	0.25	0.344	0.03	4	0.88	3/4	3.75	9
1	6.25	1.38	3.25	2.25	1.32	3.5	R-18	2.375	0.25	0.344	0.03	4	1.00	7/8	4.25	13
1 1/4	7.25	1.50	4.00	2.88	1.66	3.75	R-21	2.844	0.312	0.469	0.03	4	1.13	1	5.13	20
1 1/2	8.00	1.75	4.50	3.12	1.9	4.38	R-23	3.250	0.312	0.469	0.03	4	1.25	1 1/8	5.75	27
2	9.25	2.00	5.25	3.75	2.38	5	R-26	4.000	0.312	0.469	0.03	8	1.13	1	6.75	40
2 1/2	10.50	2.25	5.88	4.5	2.88	5.62	R-28	4.375	0.375	0.531	0.06	8	1.25	1 1/8	7.75	59
3	12.00	2.63	6.62	5.25	3.5	6.62	R-32	5.000	0.375	0.531	0.06	8	1.38	1 1/4	9.00	89
4	14.00	3.00	8.00	6.5	4.5	7.5	R-38	6.188	0.438	0.656	0.06	8	1.63	1 1/2	10.75	138
5	16.50	3.63	9.50	8	5.56	9	R-42	7.500	0.5	0.781	0.06	8	1.88	1 3/4	12.75	231
6	19.00	4.25	11.00	9.25	6.63	10.75	R-47	9.000	0.5	0.781	0.06	8	2.13	2	14.50	349
8	21.75	5.00	13.38	12	8.63	12.5	R-51	11.000	0.562	0.906	0.06	12	2.13	2	17.25	528
10	26.50	6.50	16.75	14.75	10.75	16.5	R-55	13.500	0.688	1.188	0.09	12	2.63	2 1/2	21.25	1,007
12	30.00	7.25	19.50	17.38	12.75	18.25	R-60	16.000	0.688	1.312	0.09	12	2.88	2 3/4	24.38	1,421

* Dimensions conform to ASTM A/SA-105N; ASME B16.5

* Bore to be determined at time of order.