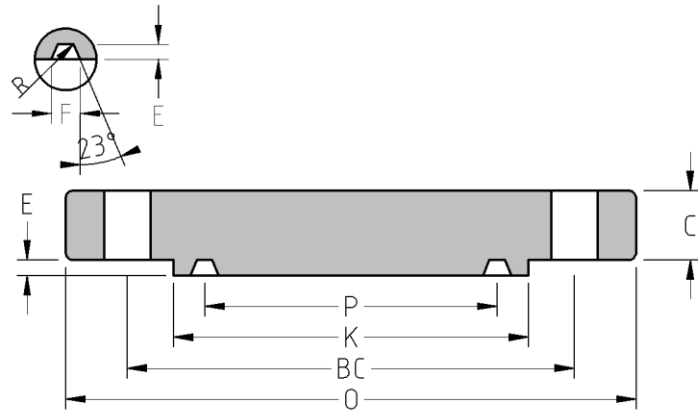




RTJ Blind Flange
CLASS 2500
Inches / Pounds



Nominal Pipe Size	Outside Diam. of Flange (O)	Thick. of Flange (C)	Min. Dia. of Raised (K)	Groove number	Pitch Dia. (P)	Depth (E)	Width (F)	Radius at Bottom	No. of Holes	Diam. of Holes (DH)	Diam. of Bolts	Diam. of Bolt Circle (BC)	Approx. Weight (in Pounds)
1/2	5.25	1.19	2.56	R-13	1.688	0.25	0.344	0.03	4	0.88	3/4	3.50	7
3/4	5.50	1.25	2.88	R-16	2.000	0.25	0.344	0.03	4	0.88	3/4	3.75	8
1	6.25	1.38	3.25	R-18	2.375	0.25	0.344	0.03	4	1.00	7/8	4.25	11
1 1/4	7.25	1.50	4.00	R-21	2.844	0.312	0.469	0.03	4	1.13	1	5.13	18
1 1/2	8.00	1.75	4.50	R-23	3.250	0.312	0.469	0.03	4	1.25	1 1/8	5.75	24
2	9.25	2.00	5.25	R-26	4.000	0.312	0.469	0.03	8	1.13	1	6.75	40
2 1/2	10.50	2.25	5.88	R-28	4.375	0.375	0.531	0.06	8	1.25	1 1/8	7.75	59
3	12.00	2.63	6.62	R-32	5.000	0.375	0.531	0.06	8	1.38	1 1/4	9.00	90
4	14.00	3.00	8.00	R-38	6.188	0.438	0.656	0.06	8	1.63	1 1/2	10.75	143
5	16.50	3.63	9.50	R-42	7.500	0.5	0.781	0.06	8	1.88	1 3/4	12.75	240
6	19.00	4.25	11.00	R-47	9.000	0.5	0.781	0.06	8	2.13	2	14.50	364
8	21.75	5.00	13.38	R-51	11.000	0.562	0.906	0.06	12	2.13	2	17.25	563
10	26.50	6.50	16.75	R-55	13.500	0.688	1.188	0.09	12	2.63	2 1/2	21.25	1,097
12	30.00	7.25	19.50	R-60	16.000	0.688	1.312	0.09	12	2.88	2 3/4	24.38	1,394

* Dimensions conform to ASTM A/SA-105N; ASME B16.5