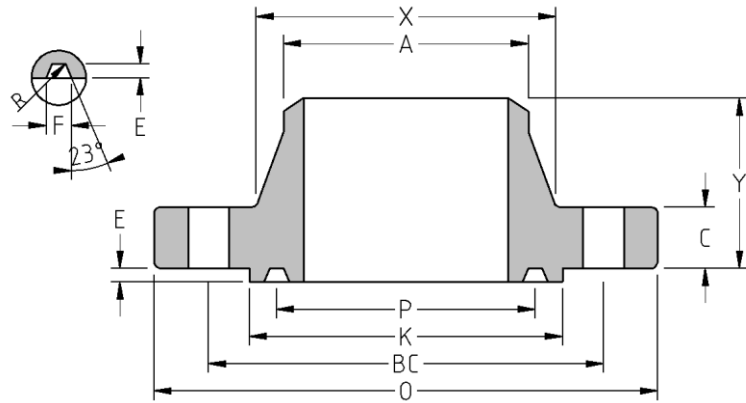




RTJ Weld Neck
Flange
CLASS 150
Inches / Pounds



Nominal Pipe Size	Outside Diam. of Flange (O)	Thick. of Flange (C)	Min. Dia. of Raised (K)	Diam. of Hub at Base (X)	Diam. of Hub at Point of Welding (A)	Length thru Hub (Y)	Groove number	Pitch Dia. (P)	Depth (E)	Width (F)	Radius at Bottom	No. of Holes	Diam. of Holes (DH)	Diam. of Bolts	Diam. of Bolt Circle (BC)	Approx. Weight (in Pounds)
1	4.25	0.56	2.50	1.94	1.32	2.19	R-15	1.875	0.25	0.344	0.03	4	0.62	0.50	3.12	4
1 ¼	4.62	0.62	2.88	2.31	1.66	2.25	R-17	2.250	0.25	0.344	0.03	4	0.62	0.50	3.50	4
1 ½	5.00	0.69	3.25	2.56	1.90	2.44	R-19	2.562	0.25	0.344	0.03	4	0.62	0.50	3.88	5
2	6.00	0.75	4.00	3.06	2.38	2.50	R-22	3.250	0.25	0.344	0.03	4	0.75	0.62	4.75	8
2 ½	7.00	0.88	4.75	3.56	2.88	2.75	R-25	4.000	0.25	0.344	0.03	4	0.75	0.62	5.50	11
3	7.50	0.94	5.25	4.25	3.50	2.75	R-29	4.500	0.25	0.344	0.03	4	0.75	0.62	6.00	13
3 ½	8.50	0.94	6.06	4.81	4.00	2.81	R-33	5.188	0.25	0.344	0.03	8	0.75	0.62	7.00	16
4	9.00	0.94	6.75	5.31	4.50	3.00	R-36	5.875	0.25	0.344	0.03	8	0.75	0.62	7.50	20
5	10.00	0.94	7.62	6.44	5.56	3.50	R-40	6.750	0.25	0.344	0.03	8	0.88	0.75	8.50	25
6	11.00	1.00	8.62	7.56	6.63	3.50	R-43	7.625	0.25	0.344	0.03	8	0.88	0.75	9.50	31
8	13.50	1.12	10.75	9.69	8.63	4.00	R-48	9.750	0.25	0.344	0.03	8	0.88	0.75	11.75	48
10	16.00	1.19	13.00	12.00	10.75	4.00	R-52	12.000	0.25	0.344	0.03	12	1.00	0.88	14.25	64
12	19.00	1.25	16.00	14.38	12.75	4.50	R-56	15.000	0.25	0.344	0.03	12	1.00	0.88	17.00	99
14	21.00	1.38	16.75	15.75	14.00	5.00	R-59	15.625	0.25	0.344	0.03	12	1.12	1.00	18.75	125
16	23.50	1.44	19.00	18.00	16.00	5.00	R-64	17.875	0.25	0.344	0.03	16	1.12	1.00	21.25	158
18	25.00	1.56	21.50	19.88	18.00	5.50	R-68	20.375	0.25	0.344	0.03	16	1.25	1.12	22.75	174
20	27.50	1.69	23.50	22.00	20.00	5.69	R-72	22.000	0.25	0.344	0.03	20	1.25	1.12	25.00	206
24	32.00	1.88	28.00	26.12	24.00	6.00	R-76	26.500	0.25	0.344	0.03	20	1.38	1.25	29.50	296

*** Dimensions conform to ASTM A/SA-105; ASME B16.5**

*** Bore to be determined at time of order.**