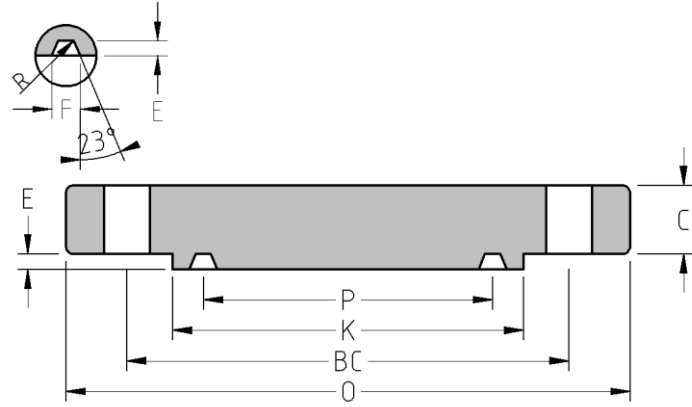




RTJ Blind Flange
CLASS 150
Inches / Pounds



Nominal Pipe Size	Outside Diam. of Flange (O)	Thick. of Flange (C)	Min. Dia. of Raised (K)	Groove number	Pitch Dia. (P)	Depth (E)	Width (F)	Radius at Bottom	No. of Holes	Diam. of Holes (DH)	Diam. of Bolts	Diam. of Bolt Circle (BC)	Approx. Weight (in Pounds)
1	4.25	0.56	2.50	R-15	1.875	0.25	0.344	0.03	4	0.62	0.50	3.12	3
1 ¼	4.62	0.62	2.88	R-17	2.250	0.25	0.344	0.03	4	0.62	0.50	3.50	4
1 ½	5.00	0.69	3.25	R-19	2.562	0.25	0.344	0.03	4	0.62	0.50	3.88	5
2	6.00	0.75	4.00	R-22	3.250	0.25	0.344	0.03	4	0.75	0.62	4.75	7
2 ½	7.00	0.88	4.75	R-25	4.000	0.25	0.344	0.03	4	0.75	0.62	5.50	10
3	7.50	0.94	5.25	R-29	4.500	0.25	0.344	0.03	4	0.75	0.62	6.00	12
3 ½	8.50	0.94	6.06	R-33	5.188	0.25	0.344	0.03	8	0.75	0.62	7.00	17
4	9.00	0.94	6.75	R-36	5.875	0.25	0.344	0.03	8	0.75	0.62	7.50	22
5	10.00	0.94	7.62	R-40	6.750	0.25	0.344	0.03	8	0.88	0.75	8.50	26
6	11.00	1.00	8.62	R-43	7.625	0.25	0.344	0.03	8	0.88	0.75	9.50	33
8	13.50	1.12	10.75	R-48	9.750	0.25	0.344	0.03	8	0.88	0.75	11.75	54
10	16.00	1.19	13.00	R-52	12.000	0.25	0.344	0.03	12	1.00	0.88	14.25	82
12	19.00	1.25	16.00	R-56	15.000	0.25	0.344	0.03	12	1.00	0.88	17.00	129
14	21.00	1.38	16.75	R-59	15.625	0.25	0.344	0.03	12	1.12	1.00	18.75	155
16	23.50	1.44	19.00	R-64	17.875	0.25	0.344	0.03	16	1.12	1.00	21.25	198
18	25.00	1.56	21.50	R-68	20.375	0.25	0.344	0.03	16	1.25	1.12	22.75	244
20	27.50	1.69	23.50	R-72	22.000	0.25	0.344	0.03	20	1.25	1.12	25.00	311
24	32.00	1.88	28.00	R-76	26.500	0.25	0.344	0.03	20	1.38	1.25	29.50	466

** Dimensions conform to ASTM A/SA-105; ASME B16.5*