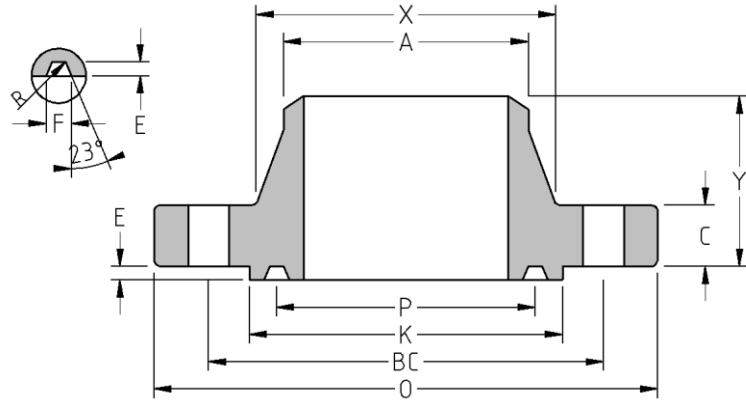




RTJ Weld Neck  
Flange  
**CLASS 1500**  
Inches / Pounds



Nominal Pipe Size	Outside Diam. of Flange (O)	Thick. of Flange (C)	Min. Dia. of Raised (K)	Diam. of Hub at Base (X)	Diam. of Hub at Point of Welding (A)	Length thru Hub (Y)	Groove number	Pitch Dia. (P)	Depth (E)	Width (F)	Radius at Bottom	No. of Holes	Diam. of Holes (DH)	Diam. of Bolts	Diam. of Bolt Circle (BC)	Approx. Weight (in Pounds)
1/2	4.75	0.88	2.38	1.50	0.84	2.38	R-12	1.562	0.25	0.344	0.03	4	0.88	0.75	3.25	5
3/4	5.12	1.00	2.62	1.75	1.05	2.75	R-14	1.750	0.25	0.344	0.03	4	0.88	0.75	3.50	6
1	5.88	1.12	2.81	2.06	1.32	2.88	R-16	2.000	0.25	0.344	0.03	4	1.00	0.88	4.00	9
1 1/4	6.25	1.12	3.19	2.50	1.66	2.88	R-18	2.375	0.25	0.344	0.03	4	1.00	0.88	4.38	10
1 1/2	7.00	1.25	3.62	2.75	1.90	3.25	R-20	2.688	0.25	0.344	0.03	4	1.12	1.00	4.88	13
2	8.50	1.50	4.88	4.12	2.38	4.00	R-24	3.750	0.312	0.469	0.03	8	1.00	0.88	6.50	26
2 1/2	9.62	1.62	5.38	4.88	2.88	4.12	R-27	4.250	0.312	0.469	0.03	8	1.12	1.00	7.50	37
3	10.50	1.88	6.62	5.25	3.50	4.62	R-35	5.375	0.312	0.469	0.03	8	1.25	1.12	8.00	50
4	12.25	2.12	7.62	6.38	4.50	4.88	R-39	6.375	0.312	0.469	0.03	8	1.38	1.25	9.50	75
5	14.75	2.88	9.00	7.75	5.56	6.12	R-44	7.625	0.312	0.469	0.03	8	1.62	1.50	11.50	133
6	15.50	3.25	9.75	9.00	6.63	6.75	R-46	8.312	0.375	0.531	0.06	12	1.50	1.38	12.50	172
8	19.00	3.62	12.50	11.50	8.63	8.38	R-50	10.625	0.438	0.656	0.06	12	1.75	1.62	15.50	291
10	23.00	4.25	14.62	14.50	10.75	10.00	R-54	12.750	0.438	0.656	0.06	12	2.00	1.88	19.00	474
12	26.50	4.88	17.25	17.75	12.75	11.12	R-58	15.000	0.562	0.906	0.06	16	2.12	2.00	22.50	734
14	29.50	5.25	19.25	19.50	14.00	11.75	R-63	16.500	0.625	1.062	0.09	16	2.38	2.25	25.00	1,000
16	32.50	5.75	21.50	21.75	16.00	12.25	R-67	18.500	0.688	1.188	0.09	16	2.62	2.50	27.75	1,332
18	36.00	6.38	24.12	23.50	18.00	12.88	R-71	21.000	0.688	1.188	0.09	16	2.88	2.75	30.50	1,728
20	38.75	7.00	26.50	25.25	20.00	14.00	R-75	23.000	0.688	1.312	0.09	16	3.12	3.00	32.75	2,171
24	46.00	8.00	31.25	30.00	24.00	16.00	R-79	27.250	0.812	1.438	0.09	16	3.62	3.50	39.00	3,530

\* Dimensions conform to ASTM A/SA-105N; ASME B16.5

\* Bore to be determined at time of order.