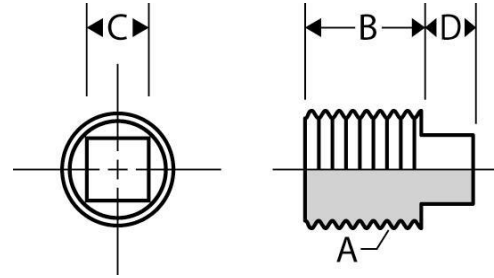




Square Head Plug  
**Standard Merchant**  
Inches / Pounds



<b>A</b> NPTF Thread	<b>B</b> Body Length, Min.	<b>C</b> Head Width, Min.	<b>D</b> Head Height, Min.
1/16 - 27	.330	.214	.178
1/8 - 27	.330	.276	.240
1/4 - 18	.445	.370	.280
3/8 - 18	.495	.428	.310
1/2 - 14	.590	.553	.380
3/4 - 14	.63	.62	.44
1 - 11 1/2	.75	.81	.50
1 1/4 - 11 1/2	.80	.93	.56
1 1/2 - 11 1/2	.83	1.12	.62
2 - 11 1/2	.88	1.31	.68

\*Merchant Steel Fittings conform to the following specifications:

Design: ASME B16.14

Material: ASTM A108

Threads: 1/8 - 2" NPTF per ASME B1.20.3