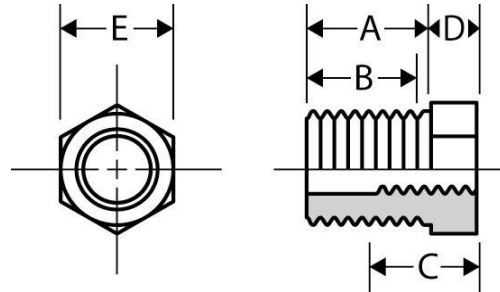




Hex Bushing  
**Standard Merchant**  
Inches / Pounds



Nominal Pipe Size	A Body Length Min.	B Length of Ext. Thread Min.	C Length of Int. Thread Min.	D Height of Head Min.	E Distance Across Flats
1/4 x 1/8	0.48	0.41	0.26	0.15	5/8
3/8 x 1/8	0.50	0.43	0.25	0.16	11/16
3/8 x 1/4	0.50	0.43	0.40	0.16	11/16
1/2 x 1/8	0.61	0.54	0.25	0.19	7/8
1/2 x 1/4	0.61	0.54	0.32	0.19	7/8
1/2 x 3/8	0.61	0.54	0.41	0.19	7/8
3/4 x 1/8	0.72	0.62	0.25	0.22	1-1/16
3/4 x 1/4	0.72	0.62	0.32	0.22	1-1/16
3/4 x 3/8	0.72	0.62	0.36	0.22	1-1/16
3/4 x 1/2	0.72	0.62	0.43	0.22	1-1/16
1 x 1/8	0.75	0.67	0.25	0.25	1-5/16
1 x 1/4	0.75	0.67	0.32	0.25	1-5/16
1 x 3/8	0.75	0.67	0.36	0.25	1-5/16
1 x 1/2	0.75	0.67	0.43	0.25	1-5/16
1 x 3/4	0.75	0.67	0.50	0.25	1-5/16
1 1/4 x 1/4	0.89	0.76	0.32	0.28	1-3/4
1 1/4 x 3/8	0.89	0.76	0.36	0.28	1-3/4
1 1/4 x 1/2	0.89	0.76	0.43	0.28	1-3/4
1 1/4 x 3/4	0.89	0.76	0.50	0.28	1-3/4
1 1/4 x 1	0.89	0.76	0.58	0.28	1-3/4
1 1/2 x 3/4	0.92	0.80	0.50	0.31	2-3/8
1 1/2 x 1	0.92	0.80	0.58	0.31	2-3/8
1 1/2 x 1 1/4	0.92	0.80	0.67	0.31	2-3/8

\*Merchant Steel Fittings conform to the following specifications:

Design: ASME B16.14

Material: ASTM A108

Threads: 1/8 - 2" NPTF per ASME B1.20.3,

2-1/2 - 3" NPT per ASME B1.20.1