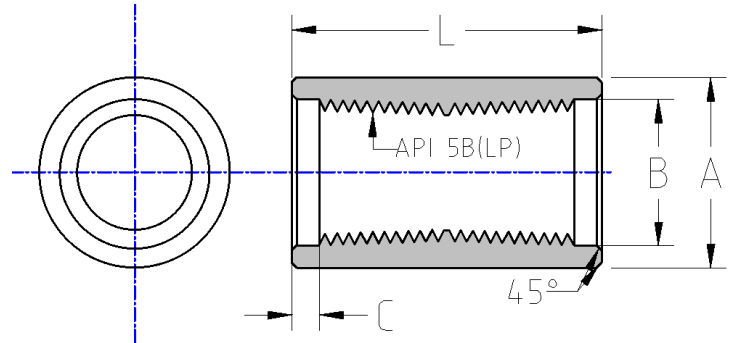




API 5L Full Coupling  
**Recessed Coupling**  
Inches / Pounds



Nominal Pipe Size	Outside Diameter (A)	Inside Diameter (B)	Recess Length (C)	Full Coupling Length (L)	Approx. Weight (in Pounds)
1/8	0.563	0.461	0.118	1.063	0.04
1/4	0.720	0.602	0.130	1.625	0.09
3/8	0.875	0.738	0.115	1.625	0.13
1/2	1.063	0.903	0.158	2.125	0.24
3/4	1.313	1.113	0.152	2.125	0.34
1	1.576	1.378	0.224	2.625	0.54
1 1/4	2.054	1.723	0.228	2.750	1.03
1 1/2	2.200	1.963	0.244	2.750	0.90
2	2.875	2.469	0.238	2.875	1.86
2 1/2	3.375	2.969	0.492	4.125	3.27
3	4.000	3.594	0.471	4.250	4.1
3 1/2	4.625	4.094	0.466	4.375	5.9
4	5.200	4.594	0.492	4.500	7.6
5	6.296	5.657	0.505	4.625	10
6	7.390	6.719	0.586	4.875	13
8	9.625	8.719	0.677	5.250	23
10	11.750	10.844	0.739	5.750	32
12	14.000	12.844	0.787	6.125	49
14	15.000	14.094	0.714	6.375	46

**\*API 5L Steel Couplings meet the following specifications:**  
**Dimensions conform to API 5L**  
**Material: API 5L Grade B**  
**Threads: API 5B(LP)**