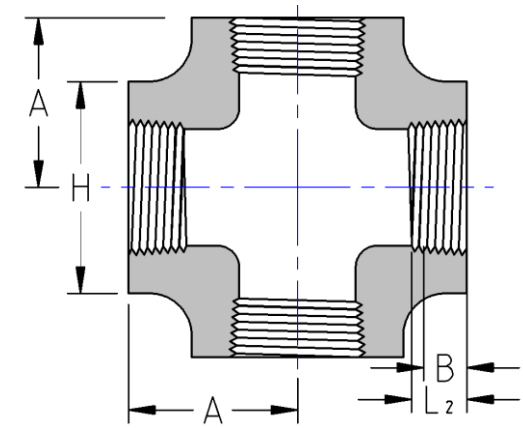




Threaded Cross
6000# Forged Steel
Inches / Pounds



Nominal pipe size	A	H	G ¹ (Minimum)	B ^{**}	L ₂ ^{**} (Minimum)	Approximate Weight (in Pounds)
1/2	1.50	1.81	0.321	0.43	0.5337	2.75
3/4	1.75	2.19	0.336	0.50	0.5457	4.31
1	2.00	2.44	0.391	0.58	0.6828	5.63
1 1/4	2.38	2.97	0.417	0.67	0.7068	10.80
1 1/2	2.50	3.31	0.436	0.70	0.7235	11.50
2	3.25	4.00	0.476	0.75	0.7565	22.20

***ASME B16.11**

****Dimension B is minimum length of perfect thread. The length of useful thread (B plus threads with fully formed roots and flat crests) shall not be less than L₂ (effective length of external thread) required by ASME B1.20.1**

¹Dimension G is the minimum wall thickness.