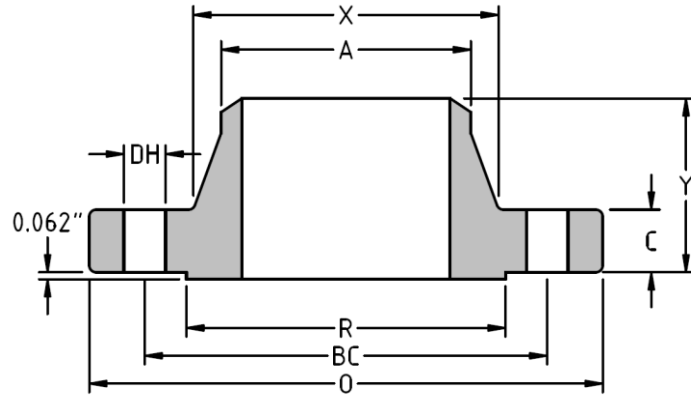




Weld Neck Flange
CLASS 300 B16.47
Series B
Inches / Pounds



Nominal Pipe Size	Outside Diam. of Flange (O)	Thick. of Flange (C)	Diam. of Raised Face (R)	Diam. of Hub at Base (X)	Diam. of Hub at Point of Welding (A)	Length thru Hub (Y)	No. of Holes	Diam. of Holes (DH)	Diam. of Bolts	Diam. of Bolt Circle (BC)	Approx. Weight (in Pounds)
26	34.12	3.44	29.00	27.62	26.19	5.63	32	1.38	1.25	31.62	407
28	36.25	3.44	31.00	29.75	28.19	5.81	36	1.38	1.25	33.75	445
30	39.00	3.63	33.25	32.00	30.25	6.16	36	1.50	1.38	36.25	542
32	41.50	4.00	35.50	34.00	32.25	6.56	32	1.63	1.50	38.50	666
34	43.62	4.00	37.50	36.12	34.25	6.75	36	1.63	1.50	40.62	715
36	46.12	4.00	39.75	38.00	36.25	7.06	32	1.75	1.63	42.88	801
38	48.12	4.31	41.75	40.00	38.25	7.5	36	1.75	1.63	44.88	895
40	50.12	4.50	43.88	42.00	40.25	7.75	40	1.75	1.63	46.88	969
42	52.50	4.63	46.00	44.00	42.31	8	36	1.88	1.75	49.00	1079
44	54.50	4.94	48.00	46.19	44.31	8.38	40	1.88	1.75	51.00	1194
46	57.50	5.00	50.00	48.38	46.31	8.69	36	2.00	1.88	53.75	1406
48	59.50	5.00	52.25	50.31	48.31	8.75	40	2.00	1.88	55.75	1449
50	61.50	5.38	54.25	52.38	50.31	9.19	44	2.00	1.88	57.75	1600
52	63.50	5.56	56.25	54.44	52.31	9.5	48	2.00	1.88	59.75	1704
54	65.88	5.32	58.25	56.50	54.31	9.38	48	2.00	1.88	62.12	1773
56	69.50	6.00	60.50	58.81	56.31	10.5	36	2.38	2.25	65.00	2382
58	71.94	6.00	62.75	60.94	58.31	10.75	40	2.38	2.25	67.44	2546
60	73.94	5.88	65.00	62.94	60.31	10.63	40	2.38	2.25	69.44	2589

* Dimensions conform to ASTM A/SA-105; ASME B16.47 Series B

* Bore to be determined at time of order.

* Weight based on XH bore.