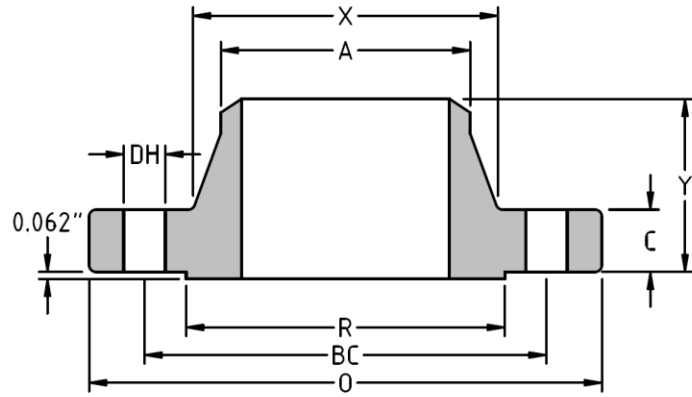




Weld Neck Flange
CLASS 300 B16.47
Series A
Inches / Pounds



Nominal Pipe Size	Outside Diam. of Flange (O)	Thick. of Flange (C)	Diam. of Raised Face (R)	Diam. of Hub at Base (X)	Diam. of Hub at Point of Welding (A)	Length thru Hub (Y)	No. of Holes	Diam. of Holes (DH)	Diam. of Bolts	Diam. of Bolt Circle (BC)	Approx. Weight (in Pounds)
26	38.25	3.07	29.50	28.38	26.00	7.19	28	1.75	1.63	31.75	625
28	40.75	3.32	31.50	30.50	28.00	7.69	28	1.75	1.63	34.00	756
30	43.00	3.57	33.75	32.56	30.00	8.19	28	1.88	1.75	36.00	874
32	45.25	3.82	36.00	34.69	32.00	8.69	28	2.00	1.88	38.50	1004
34	47.50	3.94	38.00	36.88	34.00	9.07	28	2.00	1.88	40.50	1130
36	50.00	4.07	40.25	39.00	36.00	9.44	32	2.13	2.00	42.75	1257
38	46.00	4.19	40.50	39.12	38.00	7.06	32	1.63	1.50	45.25	696
40	48.75	4.44	42.75	41.25	40.00	7.56	32	1.75	1.63	47.25	843
42	50.75	4.63	44.75	43.25	42.00	7.82	32	1.75	1.63	49.50	923
44	53.25	4.82	47.00	45.25	44.00	8.06	32	1.88	1.75	51.75	1048
46	55.75	5.00	49.00	47.38	46.00	8.44	28	2.00	1.88	53.75	1209
48	57.75	5.19	51.25	49.38	48.00	8.75	32	2.00	1.88	56.00	1291
50	60.25	5.44	53.50	51.38	50.00	9.07	32	2.13	2.00	58.25	1462
52	62.25	5.63	55.50	53.38	52.00	9.32	32	2.13	2.00	60.50	1573
54	65.25	5.94	57.75	55.50	54.00	9.88	28	2.38	2.25	62.75	1891
56	67.25	6.00	59.75	57.62	56.00	10.19	28	2.38	2.25	65.00	1997
58	69.25	6.19	62.00	59.62	58.00	10.44	32	2.38	2.25	67.25	2101
60	71.25	6.38	64.00	61.62	60.00	10.69	32	2.38	2.25	69.25	2240

* Dimensions conform to ASTM A/SA-105; ASME B16.47 Series A

* Bore to be determined at time of order.

* Weight based on XH bore.