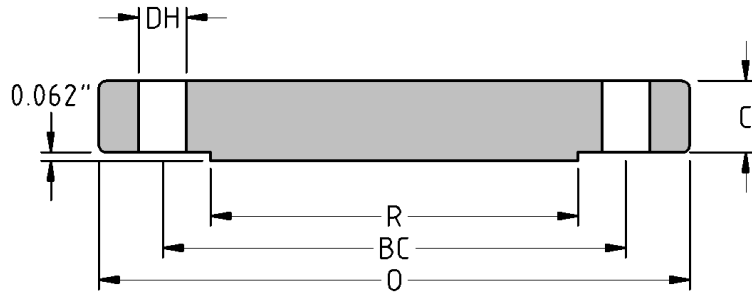




Blind Flange  
**CLASS 300 B16.47**  
**Series B**  
Inches / Pounds



Nominal Pipe Size	Outside Diam. of Flange (O)	Thick. of Flange (C)	Diam. of Raised Face (R)	No. of Holes	Diam. of Holes (DH)	Diam. of Bolts	Diam. of Bolt Circle (BC)	Approx. Weight (in Pounds)
26	34.12	3.44	29.00	32	1.38	1.25	31.62	877
28	36.25	3.44	31.00	36	1.38	1.25	33.75	990
30	39.00	3.63	33.25	36	1.50	1.38	36.25	1206
32	41.50	4.00	35.50	32	1.63	1.50	38.50	1510
34	43.62	4.00	37.50	36	1.63	1.50	40.62	1667
36	46.12	4.00	39.75	32	1.75	1.63	42.88	1871
38	48.12	4.31	41.75	36	1.75	1.63	44.88	2190
40	50.12	4.50	43.88	40	1.75	1.63	46.88	2477
42	52.50	4.63	46.00	36	1.88	1.75	49.00	2803
44	54.50	4.94	48.00	40	1.88	1.75	51.00	3217
46	57.50	5.06	50.00	36	2.00	1.88	53.75	3680
48	59.50	5.25	52.25	40	2.00	1.88	55.75	4081
50	61.50	5.44	54.25	44	2.00	1.88	57.75	4510
52	63.50	5.61	56.25	48	2.00	1.88	59.75	4952
54	65.88	5.81	58.25	48	2.00	1.88	62.12	5538
56	69.50	6.12	60.50	36	2.38	2.25	65.00	6502
58	71.94	6.31	62.75	40	2.38	2.25	67.44	7170
60	73.94	6.56	65.00	40	2.38	2.25	69.44	7820

\* Dimensions conform to ASTM A/SA-105; ASME B16.47 Series B