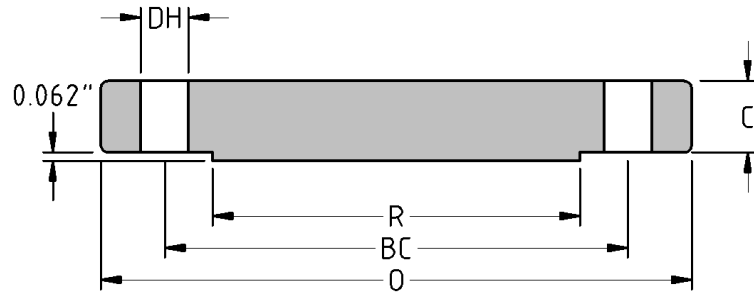




Blind Flange
CLASS 300 B16.47
Series A
Inches / Pounds



Nominal Pipe Size	Outside Diam. of Flange (O)	Thick. of Flange (C)	Diam. of Raised Face (R)	No. of Holes	Diam. of Holes (DH)	Diam. of Bolts	Diam. of Bolt Circle (BC)	Approx. Weight (in Pounds)
26	38.25	3.25	29.50	28	1.75	1.63	31.75	1011
28	40.75	3.50	31.50	28	1.75	1.63	34.00	1243
30	43.00	3.69	33.75	28	1.88	1.75	36.00	1457
32	45.25	3.88	36.00	28	2.00	1.88	38.50	1693
34	47.50	4.07	38.00	28	2.00	1.88	40.50	1967
36	50.00	4.32	40.25	32	2.13	2.00	42.75	2292
38	46.00	4.19	40.50	32	1.63	1.50	45.25	1921
40	48.75	4.44	42.75	32	1.75	1.63	47.25	2282
42	50.75	4.63	44.75	32	1.75	1.63	49.50	2587
44	53.25	4.82	47.00	32	1.88	1.75	51.75	2958
46	55.75	5.00	49.00	28	2.00	1.88	53.75	3375
48	57.75	5.19	51.25	32	2.00	1.88	56.00	3749
50	60.25	5.44	53.50	32	2.13	2.00	58.25	4269
52	62.25	5.63	55.50	32	2.13	2.00	60.50	4728
54	65.25	5.94	57.75	28	2.38	2.25	62.75	5478
56	67.25	6.00	59.75	28	2.38	2.25	65.00	5891
58	69.25	6.19	62.00	32	2.38	2.25	67.25	6426
60	71.25	6.38	64.00	32	2.38	2.25	69.25	7025

** Dimensions conform to ASTM A/SA-105; ASME B16.47 Series A*