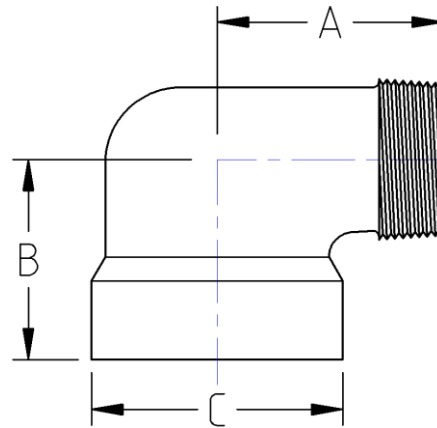




Threaded 90° Street Elbow  
**3000# Forged Steel**  
Inches / Pounds



Nominal pipe size	A	B	C	Approximate Weight (in Pounds)
1/8	1.00	0.75	0.75	0.25
1/4	1.25	0.88	1.00	0.25
3/8	1.50	1.00	1.25	0.38
1/2	1.62	1.12	1.50	0.58
3/4	1.88	1.38	1.75	0.92
1	2.25	1.75	2.00	1.44
1 1/4	2.62	2.00	2.44	2.44
1 1/2	2.81	2.12	2.75	3.95
2	3.31	2.50	3.31	5.28

**\*ASME B16.11**