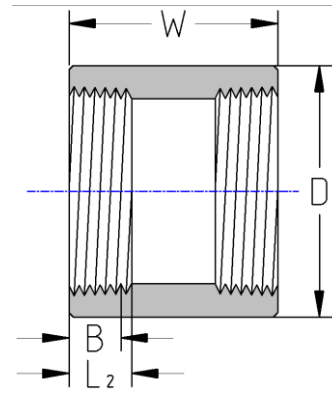




Threaded Full Coupling
3000# Forged Steel
Inches / Pounds



| Nominal Pipe size | D | W | B** | L ₂ ** | Approximate Weight (in Pounds) |
|-------------------|------|------|------|-------------------|--------------------------------|
| 1/8 | 0.62 | 1.25 | 0.25 | 0.2639 | 0.11 |
| 1/4 | 0.75 | 1.38 | 0.32 | 0.4018 | 0.10 |
| 3/8 | 0.88 | 1.50 | 0.36 | 0.4078 | 0.12 |
| 1/2 | 1.12 | 1.88 | 0.43 | 0.5337 | 0.28 |
| 3/4 | 1.33 | 2.00 | 0.50 | 0.5457 | 0.43 |
| 1 | 1.75 | 2.38 | 0.58 | 0.6828 | 0.88 |
| 1 1/4 | 2.25 | 2.62 | 0.67 | 0.7068 | 1.56 |
| 1 1/2 | 2.50 | 3.12 | 0.70 | 0.7235 | 2.15 |
| 2 | 3.00 | 3.38 | 0.75 | 0.7565 | 3.06 |
| 2 1/2 | 3.62 | 3.62 | 0.93 | 1.1380 | 4.76 |
| 3 | 4.25 | 4.25 | 1.02 | 1.2000 | 6.62 |
| 4 | 5.50 | 4.75 | 1.09 | 1.3000 | 14.5 |

***ASME B16.11**

****Dimension B is minimum length of perfect thread. The length of useful thread (B plus threads with fully formed roots and flat crests) shall not be less than L₂ (effective length of external thread) required by ASME B1.20.1**