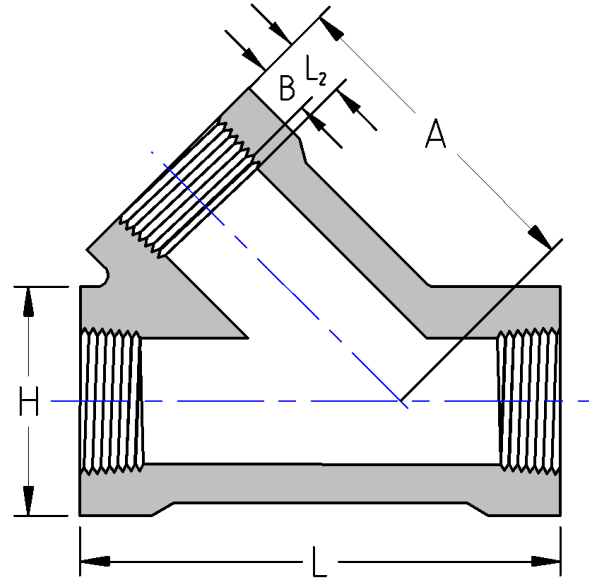




Threaded Lateral
3000# Forged Steel
Inches / Pounds



Size	A	B	L	H	L2	Approximate Weight (in Pounds)
1/2	2.56	0.43	3.56	1.56	0.54	1.75
3/4	3.00	0.50	4.13	1.84	0.55	2.75
1	3.50	0.58	4.81	2.22	0.68	4.63
1 1/4	3.94	0.67	5.38	2.50	0.71	5.50
1 1/2	4.75	0.70	6.44	3.03	0.72	10.81
2	5.00	0.75	6.63	3.34	0.76	9.50

****Manufacturers Standard***