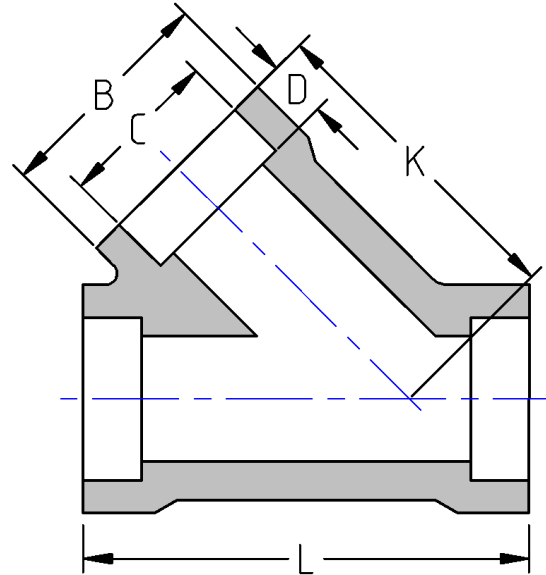




Socket Weld Lateral
3000# Forged Steel
Inches / Pounds



Size	B	C	D	K	L	Approximate Weight (in Pounds)
1/2	1.31	0.86	0.37	2.13	3.00	1.00
3/4	1.56	1.07	0.49	2.56	3.56	1.50
1	1.84	1.33	0.49	3.00	4.13	2.38
1 1/4	2.22	1.68	0.49	3.50	4.81	3.75
1 1/2	2.50	1.92	0.49	3.94	5.38	4.13
2	3.03	2.41	0.63	4.75	6.44	6.29

****Manufacturers Standard***