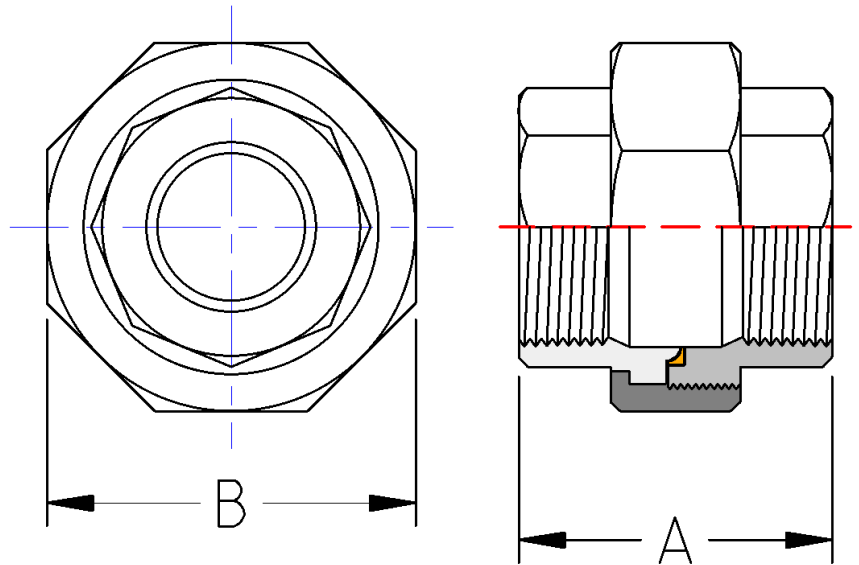




Union with Brass Seat
300# Malleable Iron
Inches / Pounds



Nominal Pipe Size	End to End (A)	Width Across Flats (B)	Approx. Weight (in Pounds)
1/4	1.55	0.93	0.47
3/8	1.71	1.33	0.49
1/2	1.81	1.50	0.53
3/4	2.12	1.76	0.80
1	2.31	2.15	1.27
1 1/4	2.66	2.48	1.63
1 1/2	2.85	3.02	2.13
2	3.23	3.28	3.46
2 1/2	3.33	3.96	5.05
3	4.09	4.72	7.66
4	4.47	5.37	17.70

- *Malleable Castings conform to ASTM A197*
- *Hot-Dipped Galvanized Fittings conform to ASTM A153*
- *Malleable Fitting Dimensions conform to ASME B16.3*
- *Malleable Bushings, Plugs and Locknuts conform to ASME B16.14*
- *Malleable Unions conform to ASME B16.39*
- *NPT Threads on all fittings conform to ASME B1.20.1*