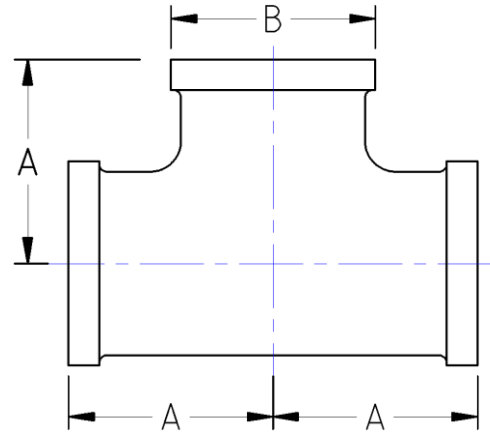




Straight Tee
300# Malleable Iron
Inches / Pounds



Nominal Pipe Size	Center to End (A)	Outside Diameter (B)	Nominal Metal Thickness	Approximate Weight (in Pounds)
1/4	0.94	0.93	0.14	0.27
3/8	1.06	1.12	0.15	0.42
1/2	1.25	1.34	0.16	0.65
3/4	1.44	1.63	0.18	1.07
1	1.63	1.95	0.20	1.63
1 1/4	1.94	2.39	0.22	2.53
1 1/2	2.13	2.68	0.24	3.40
2	2.50	3.28	0.26	5.20
2 1/2	2.94	3.86	0.31	7.96
3	3.38	4.62	0.35	12.60
4	4.50	5.67	0.39	23.90

- *Malleable Castings conform to ASTM A197***
- *Hot-Dipped Galvanized Fittings conform to ASTM A153***
- *Malleable Fitting Dimensions conform to ASME B16.3***
- *Malleable Bushings, Plugs and Locknuts conform to ASME B16.14***
- *Malleable Unions conform to ASME B16.39***
- *NPT Threads on all fittings conform to ASME B1.20.1***