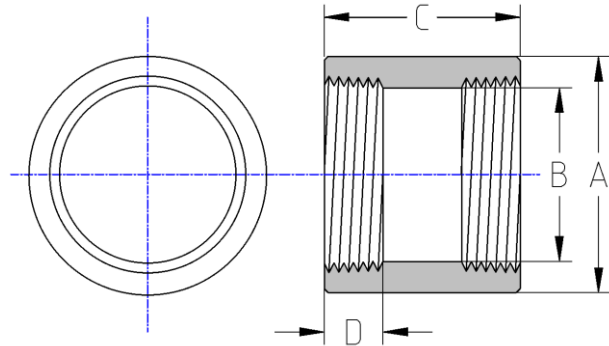




Coupling
300# Malleable Iron
Inches / Pounds



Nominal Pipe Size	Outside Diameter Min. (A)	Inside Diameter (B) Min/Max	End to End (C)	Internal Thread Length Min. (D)	Nominal Metal Thickness	Approx. Weight (in Pounds)
1/4	0.93	0.54 / 0.58	1.37	0.43	0.14	0.17
3/8	1.12	0.67 / 0.72	1.62	0.47	0.15	0.26
1/2	1.34	0.84 / 0.90	1.87	0.57	0.16	0.42
3/4	1.63	1.05 / 1.11	2.12	0.64	0.18	0.65
1	1.95	1.31 / 1.38	2.37	0.75	0.2	0.99
1 1/4	2.39	1.66 / 1.73	2.87	0.84	0.22	1.64
1 1/2	2.68	1.90 / 1.97	2.87	0.87	0.24	2.04
2	3.28	2.37 / 2.44	3.62	1.00	0.26	3.24
2 1/2	3.86	2.87 / 2.97	4.12	1.17	0.31	5.45
3	4.62	3.50 / 3.60	4.12	1.23	0.35	7.30
4	5.67	4.50 / 4.60	4.69	1.38	0.39	11.20

- *Malleable Castings conform to ASTM A197***
- *Hot-Dipped Galvanized Fittings conform to ASTM A153***
- *Malleable Fitting Dimensions conform to ASME B16.3***
- *Malleable Bushings, Plugs and Locknuts conform to ASME B16.14***
- *Malleable Unions conform to ASME B16.39***
- *NPT Threads on all fittings conform to ASME B1.20.1***