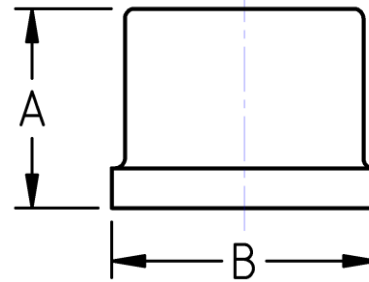




Cap
300# Malleable Iron
Inches / Pounds



| Nominal Pipe Size | End to End (A) | Outside Diameter (B) | Approx. Weight (in Pounds) |
|-------------------|----------------|----------------------|----------------------------|
| 1/4 | 0.78 | 0.93 | 0.10 |
| 3/8 | 0.83 | 1.12 | 0.15 |
| 1/2 | 0.98 | 1.34 | 0.23 |
| 3/4 | 1.08 | 1.63 | 0.35 |
| 1 | 1.26 | 1.95 | 0.58 |
| 1 1/4 | 1.38 | 2.39 | 0.94 |
| 1 1/2 | 1.43 | 2.68 | 1.18 |
| 2 | 1.68 | 3.28 | 1.94 |
| 2 1/2 | 2.06 | 3.86 | 3.32 |
| 3 | 2.17 | 4.62 | 4.71 |
| 4 | 2.48 | 5.67 | 7.68 |

****Malleable Castings conform to ASTM A197***

****Hot-Dipped Galvanized Fittings conform to ASTM A153***

****Malleable Fitting Dimensions conform to ASME B16.3***

****Malleable Bushings, Plugs and Locknuts conform to ASME B16.14***

****Malleable Unions conform to ASME B16.39***

****NPT Threads on all fittings conform to ASME B1.20.1***