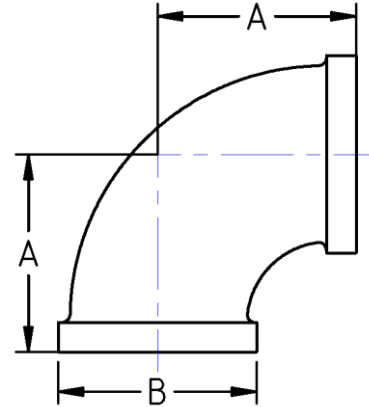




90° Elbow  
**300# Malleable Iron**  
Inches / Pounds



Nominal Pipe Size	Center to End (A)	Outside Diameter (B)	Nominal Metal Thickness	Approximate Weight (in Pounds)
1/4	0.94	0.93	0.14	0.20
3/8	1.06	1.12	0.15	0.29
1/2	1.25	1.34	0.16	0.47
3/4	1.44	1.63	0.18	0.66
1	1.63	1.95	0.20	1.16
1 1/4	1.94	2.39	0.22	1.88
1 1/2	2.13	2.68	0.24	2.46
2	2.50	3.28	0.26	4.17
2 1/2	2.94	3.86	0.31	5.30
3	3.38	4.62	0.35	9.65
4	4.50	5.67	0.39	16.00

- \*Malleable Castings conform to ASTM A197***
- \*Hot-Dipped Galvanized Fittings conform to ASTM A153***
- \*Malleable Fitting Dimensions conform to ASME B16.3***
- \*Malleable Bushings, Plugs and Locknuts conform to ASME B16.14***
- \*Malleable Unions conform to ASME B16.39***
- \*NPT Threads on all fittings conform to ASME B1.20.1***