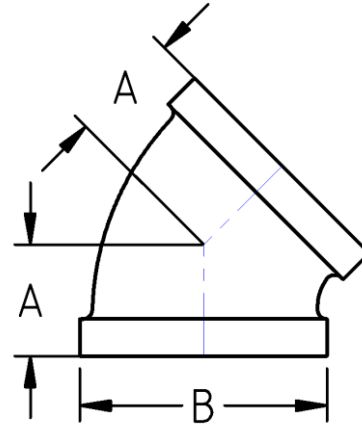




45° Elbow
300# Malleable Iron
Inches / Pounds



Nominal Pipe Size	Center to End (A)	Outside Diameter (B)	Nominal Metal Thickness	Approximate Weight (in Pounds)
1/4	0.81	0.93	0.14	0.19
3/8	0.88	1.12	0.15	0.28
1/2	1.00	1.34	0.16	0.43
3/4	1.13	1.63	0.18	0.66
1	1.31	1.95	0.20	1.00
1 1/4	1.50	2.39	0.22	1.67
1 1/2	1.69	2.68	0.24	2.15
2	2.00	3.28	0.26	3.40
2 1/2	2.25	3.86	0.31	5.51
3	2.50	4.62	0.35	8.10
4	2.81	5.67	0.39	13.40

- *Malleable Castings conform to ASTM A197***
- *Hot-Dipped Galvanized Fittings conform to ASTM A153***
- *Malleable Fitting Dimensions conform to ASME B16.3***
- *Malleable Bushings, Plugs and Locknuts conform to ASME B16.14***
- *Malleable Unions conform to ASME B16.39***
- *NPT Threads on all fittings conform to ASME B1.20.1***