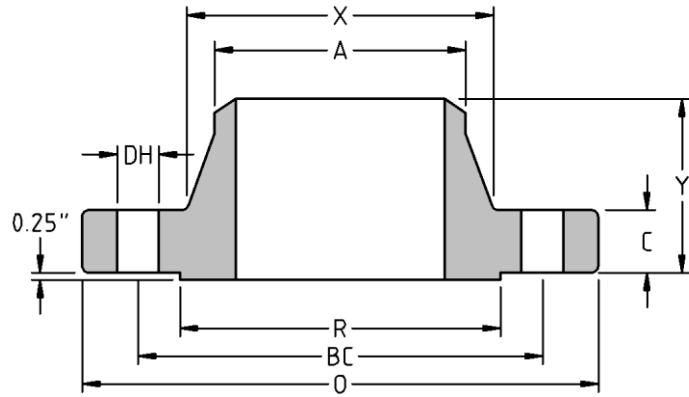




Weld Neck Flange
CLASS 2500
Inches / Pounds



Nominal Pipe Size	Outside Diam. of Flange (O)	Thick. of Flange (C)	Diam. of Raised Face (R)	Diam. of Hub at Base (X)	Diam. of Hub at Point of Welding (A)	Length thru Hub (Y)	No. of Holes	Diam. of Holes (DH)	Diam. of Bolts	Diam. of Bolt Circle (BC)	Approx. Weight (in Pounds)
1/2	5.25	1.19	1.38	1.69	0.84	2.88	4	0.88	3/4	3.50	7
3/4	5.50	1.25	1.69	2	1.05	3.12	4	0.88	3/4	3.75	9
1	6.25	1.38	2.00	2.25	1.32	3.5	4	1.00	7/8	4.25	13
1 1/4	7.25	1.50	2.50	2.88	1.66	3.75	4	1.13	1	5.13	19
1 1/2	8.00	1.75	2.88	3.12	1.9	4.38	4	1.25	1 1/8	5.75	26
2	9.25	2.00	3.63	3.75	2.38	5	8	1.13	1	6.75	39
2 1/2	10.50	2.25	4.13	4.5	2.88	5.62	8	1.25	1 1/8	7.75	56
3	12.00	2.63	5.00	5.25	3.5	6.62	8	1.38	1 1/4	9.00	85
4	14.00	3.00	6.19	6.5	4.5	7.5	8	1.63	1 1/2	10.75	130
5	16.50	3.63	7.31	8	5.56	9	8	1.88	1 3/4	12.75	216
6	19.00	4.25	8.50	9.25	6.63	10.75	8	2.13	2	14.50	330
8	21.75	5.00	10.63	12	8.63	12.5	12	2.13	2	17.25	495
10	26.50	6.50	12.75	14.75	10.75	16.5	12	2.63	2 1/2	21.25	935
12	30.00	7.25	15.00	17.38	12.75	18.25	12	2.88	2 3/4	24.38	1327

*** Dimensions conform to ASTM A/SA-105N; ASME B16.5**

*** Bore to be determined at time of order.**