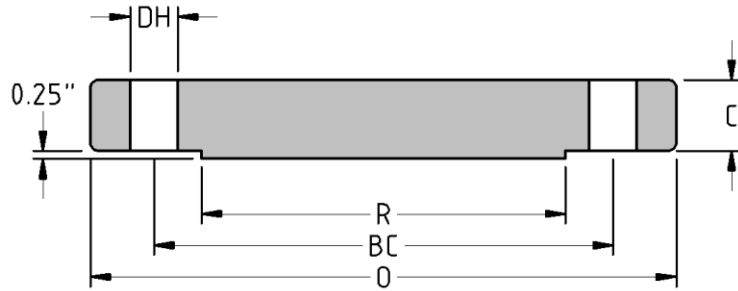




Blind Flange  
**CLASS 2500**  
Inches / Pounds



Nominal Pipe Size	Outside Diam. of Flange (O)	Thick. of Flange (C)	Diam. of Raised Face (R)	No. of Holes	Diam. of Holes (DH)	Diam. of Bolts	Diam. of Bolt Circle (BC)	Approx. Weight (in Pounds)
1/2	5.25	1.19	1.38	4	0.88	3/4	3.50	7
3/4	5.50	1.25	1.69	4	0.88	3/4	3.75	8
1	6.25	1.38	2.00	4	1.00	7/8	4.25	11
1 1/4	7.25	1.50	2.50	4	1.13	1	5.13	17
1 1/2	8.00	1.75	2.88	4	1.25	1 1/8	5.75	23
2	9.25	2.00	3.63	8	1.13	1	6.75	39
2 1/2	10.50	2.25	4.13	8	1.25	1 1/8	7.75	56
3	12.00	2.63	5.00	8	1.38	1 1/4	9.00	86
4	14.00	3.00	6.19	8	1.63	1 1/2	10.75	135
5	16.50	3.63	7.31	8	1.88	1 3/4	12.75	225
6	19.00	4.25	8.50	8	2.13	2	14.50	345
8	21.75	5.00	10.63	12	2.13	2	17.25	530
10	26.50	6.50	12.75	12	2.63	2 1/2	21.25	1025
12	30.00	7.25	15.00	12	2.88	2 3/4	24.38	1300

**\* Dimensions conform to ASTM A/SA-105N; ASME B16.5**