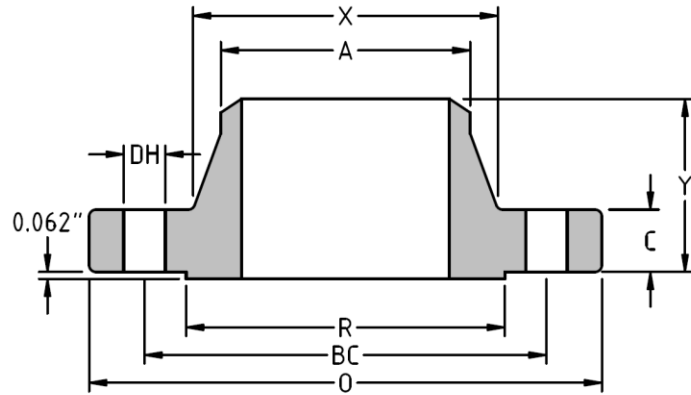




Weld Neck Flange
CLASS 150 B16.47
Series B
Inches / Pounds



Nominal Pipe Size	Outside Diam. of Flange (O)	Thick. of Flange (C)	Diam. of Raised Face (R)	Diam. of Hub at Base (X)	Diam. of Hub at Point of Welding (A)	Length thru Hub (Y)	No. of Holes	Diam. of Holes (DH)	Diam. of Bolts	Diam. of Bolt Circle (BC)	Approx. Weight (in Pounds)
26	30.94	1.57	28.00	26.94	26.06	3.44	36	0.88	0.75	29.31	126
28	32.94	1.69	30.00	28.94	28.06	3.69	40	0.88	0.75	31.31	145
30	34.94	1.69	32.00	31.00	30.06	3.88	44	0.88	0.75	33.31	158
32	37.06	1.75	34.00	33.06	32.06	4.19	48	0.88	0.75	35.44	180
34	39.56	1.88	36.25	35.12	34.06	4.28	40	1.00	0.88	37.69	219
36	41.62	2.00	38.25	37.19	36.06	4.57	44	1.00	0.88	39.75	250
38	44.25	2.07	40.25	39.25	38.12	4.82	40	1.13	1.00	42.12	295
40	46.25	2.13	42.50	41.31	40.12	5	44	1.13	1.00	44.12	320
42	48.25	2.25	44.50	43.38	42.12	5.19	48	1.13	1.00	46.12	353
44	50.25	2.32	46.50	45.38	44.12	5.32	52	1.13	1.00	48.12	379
46	52.81	2.38	48.62	47.44	46.12	5.63	40	1.25	1.13	50.56	447
48	54.81	2.50	50.75	49.50	48.12	5.82	44	1.25	1.13	52.56	487
50	56.81	2.63	52.75	51.50	50.12	6	48	1.25	1.13	54.56	527
52	58.81	2.69	54.75	53.56	52.12	6.13	52	1.25	1.13	56.56	559
54	61.00	2.75	56.75	55.62	54.12	6.32	56	1.25	1.13	58.75	610
56	63.00	2.82	58.75	57.69	56.12	6.5	60	1.25	1.13	60.75	650
58	65.94	2.88	60.75	59.69	58.12	6.82	48	1.38	1.25	63.44	777
60	67.94	2.94	63.00	61.81	60.12	7	52	1.38	1.25	65.44	825

* Dimensions conform to ASTM A/SA-105; ASME B16.47 Series B

* Bore to be determined at time of order.

* Weight based on STD bore.