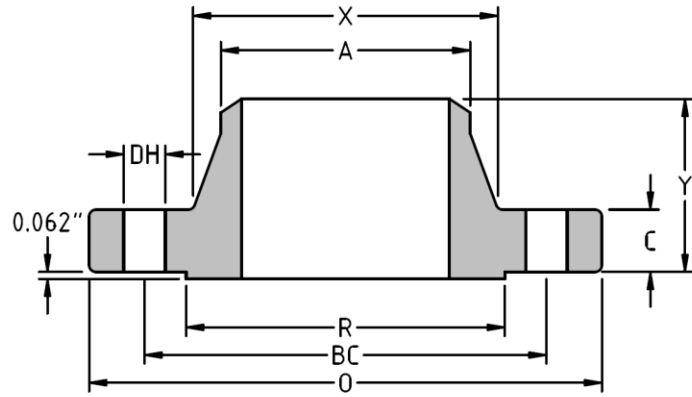




Weld Neck Flange  
**CLASS 150 B16.47**  
**Series A**  
Inches / Pounds



Nominal Pipe Size	Outside Diam. of Flange (O)	Thick. of Flange (C)	Diam. of Raised Face (R)	Diam. of Hub at Base (X)	Diam. of Hub at Point of Welding (A)	Length thru Hub (Y)	No. of Holes	Diam. of Holes (DH)	Diam. of Bolts	Diam. of Bolt Circle (BC)	Approx. Weight (in Pounds)
26	34.25	2.63	29.50	26.62	26.00	4.69	24	1.38	1.25	31.75	316
28	36.50	2.75	31.50	28.62	28.00	4.88	28	1.38	1.25	34.00	361
30	38.75	2.88	33.75	30.75	30.00	5.32	28	1.38	1.25	36.00	422
32	41.75	3.13	36.00	32.75	32.00	5.63	28	1.63	1.50	38.50	529
34	43.75	3.19	38.00	34.75	34.00	5.82	32	1.63	1.50	40.50	566
36	46.00	3.50	40.25	36.75	36.00	6.13	32	1.63	1.50	42.75	671
38	48.75	3.38	42.25	39.00	38.00	6.13	32	1.63	1.50	45.25	749
40	50.75	3.50	44.25	41.00	40.00	6.38	36	1.63	1.50	47.25	808
42	53.00	3.75	47.00	43.00	42.00	6.69	36	1.63	1.50	49.50	928
44	55.25	3.94	49.00	45.00	44.00	6.94	40	1.63	1.50	51.75	1033
46	57.25	4.00	51.00	47.12	46.00	7.25	40	1.63	1.50	53.75	1105
48	59.50	4.19	53.50	49.12	48.00	7.5	44	1.63	1.50	56.00	1223
50	61.75	4.32	55.50	51.25	50.00	7.94	44	1.88	1.75	58.25	1316
52	64.00	4.50	57.50	53.25	52.00	8.19	44	1.88	1.75	60.50	1456
54	66.25	4.69	59.50	55.25	54.00	8.44	44	1.88	1.75	62.75	1609
56	68.75	4.82	62.00	57.38	56.00	8.94	48	1.88	1.75	65.00	1791
58	71.00	5.00	64.00	59.38	58.00	9.19	48	1.88	1.75	67.25	1961
60	73.00	5.13	66.00	61.38	60.00	9.38	52	1.88	1.75	69.25	2063

\* Dimensions conform to ASTM A/SA-105; ASME B16.47 Series A

\* Bore to be determined at time of order.

\* Weight based on STD bore.