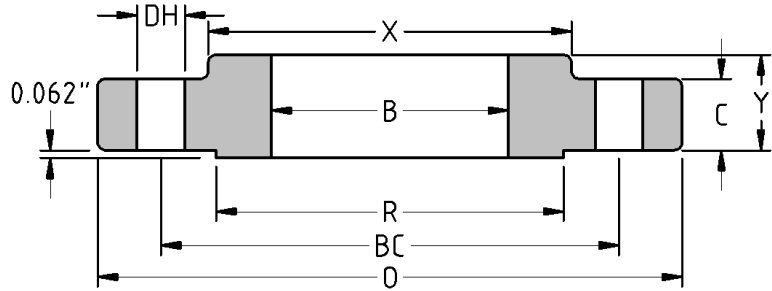




Slip-On Flange  
**CLASS 150**  
Inches / Pounds



Nominal Pipe Size	Outside Diam. of Flange (O)	Thick. of Flange (C)	Diam. of Raised Face (R)	Diam. of Hub at Base (X)	Length thru Hub (Y)	Diam. of Bore (B)	No. of Holes	Diam. of Holes (DH)	Diam. of Bolts	Diam. of Bolt Circle (BC)	Approx. Weight (in Pounds)
1/2	3.50	0.38	1.38	1.19	0.62	0.88	4	0.62	0.50	2.38	1
3/4	3.88	0.44	1.69	1.50	0.62	1.09	4	0.62	0.50	2.75	2
1	4.25	0.5	2.00	1.94	0.69	1.36	4	0.62	0.50	3.12	2
1 1/4	4.62	0.56	2.50	2.31	0.81	1.70	4	0.62	0.50	3.50	3
1 1/2	5.00	0.63	2.88	2.56	0.88	1.95	4	0.62	0.50	3.88	3
2	6.00	0.69	3.62	3.06	1.00	2.44	4	0.75	0.62	4.75	5
2 1/2	7.00	0.82	4.12	3.56	1.12	2.94	4	0.75	0.62	5.50	7
3	7.50	0.88	5.00	4.25	1.19	3.57	4	0.75	0.62	6.00	8
3 1/2	8.50	0.88	5.50	4.81	1.25	4.07	8	0.75	0.62	7.00	11
4	9.00	0.88	6.19	5.31	1.31	4.57	8	0.75	0.62	7.50	13
5	10.00	0.88	7.31	6.44	1.44	5.66	8	0.88	0.75	8.50	15
6	11.00	0.94	8.50	7.56	1.56	6.72	8	0.88	0.75	9.50	19
8	13.50	1.06	10.62	9.69	1.75	8.72	8	0.88	0.75	11.75	30
10	16.00	1.13	12.75	12.00	1.94	10.88	12	1.00	0.88	14.25	43
12	19.00	1.19	15.00	14.38	2.19	12.88	12	1.00	0.88	17.00	64
14	21.00	1.32	16.25	15.75	2.25	14.14	12	1.12	1.00	18.75	90
16	23.50	1.38	18.50	18.00	2.50	16.16	16	1.12	1.00	21.25	98
18	25.00	1.5	21.00	19.88	2.69	18.18	16	1.25	1.12	22.75	130
20	27.50	1.63	23.00	22.00	2.88	20.20	20	1.25	1.12	25.00	165
22	29.50	1.82	25.25	24.25	3.13	22.22	20	1.38	1.25	27.25	185
24	32.00	1.88	27.25	26.12	3.25	24.25	20	1.38	1.25	29.50	220

*\* Dimensions conform to ASTM A/SA-105; ASME B16.5*