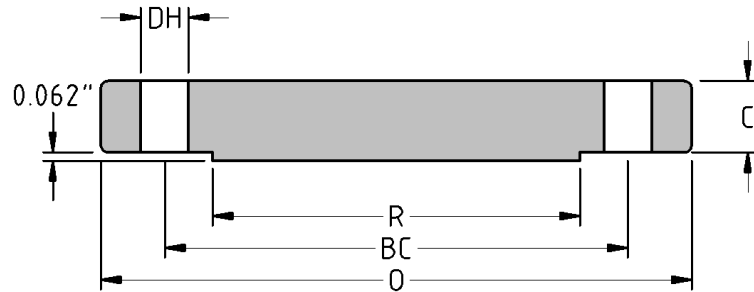




Blind Flange  
**CLASS 150 B16.47**  
**Series B**  
Inches / Pounds



Nominal Pipe Size	Outside Diam. of Flange (O)	Thick. of Flange (C)	Diam. of Raised Face (R)	No. of Holes	Diam. of Holes (DH)	Diam. of Bolts	Diam. of Bolt Circle (BC)	Approx. Weight (in Pounds)
26	30.94	1.69	28.00	36	0.88	0.75	29.31	369
28	32.94	1.82	30.00	40	0.88	0.75	31.31	450
30	34.94	1.94	32.00	44	0.88	0.75	33.31	539
32	37.06	2.07	34.00	48	0.88	0.75	35.44	647
34	39.56	2.19	36.25	40	1.00	0.88	37.69	779
36	41.62	2.25	38.25	44	1.00	0.88	39.75	886
38	44.25	2.44	40.25	40	1.13	1.00	42.12	1083
40	46.25	2.57	42.50	44	1.13	1.00	44.12	1245
42	48.25	2.63	44.50	48	1.13	1.00	46.12	1386
44	50.25	2.75	46.50	52	1.13	1.00	48.12	1571
46	52.81	2.88	48.62	40	1.25	1.13	50.56	1822
48	54.81	3.00	50.75	44	1.25	1.13	52.56	2042
50	56.81	3.13	52.75	48	1.25	1.13	54.56	2287
52	58.81	3.25	54.75	52	1.25	1.13	56.56	2543
54	61.00	3.38	56.75	56	1.25	1.13	58.75	2843
56	63.00	3.50	58.75	60	1.25	1.13	60.75	3138
58	65.94	3.62	60.75	48	1.38	1.25	63.44	3563
60	67.94	3.75	63.00	52	1.38	1.25	65.44	3915

*\* Dimensions conform to ASTM A/SA-105; ASME B16.47 Series B*