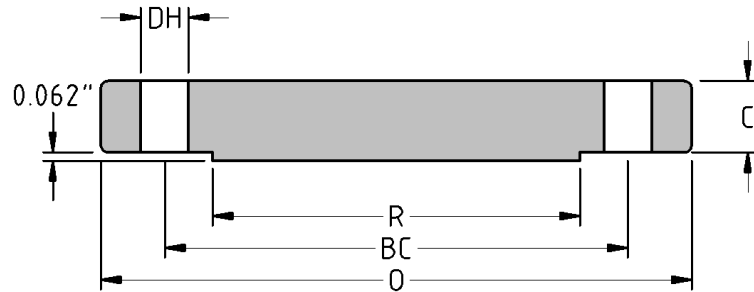




Blind Flange
CLASS 150 B16.47
Series A
Inches / Pounds



Nominal Pipe Size	Outside Diam. of Flange (O)	Thick. of Flange (C)	Diam. of Raised Face (R)	No. of Holes	Diam. of Holes (DH)	Diam. of Bolts	Diam. of Bolt Circle (BC)	Approx. Weight (in Pounds)
26	34.25	2.63	29.50	24	1.38	1.25	31.75	688
28	36.50	2.75	31.50	28	1.38	1.25	34.00	815
30	38.75	2.88	33.75	28	1.38	1.25	36.00	966
32	41.75	3.13	36.00	28	1.63	1.50	38.50	1208
34	43.75	3.19	38.00	32	1.63	1.50	40.50	1350
36	46.00	3.50	40.25	32	1.63	1.50	42.75	1643
38	48.75	3.38	42.25	32	1.63	1.50	45.25	1790
40	50.75	3.50	44.25	36	1.63	1.50	47.25	2005
42	53.00	3.75	47.00	36	1.63	1.50	49.50	2349
44	55.25	3.94	49.00	40	1.63	1.50	51.75	2679
46	57.25	4.00	51.00	40	1.63	1.50	53.75	2927
48	59.50	4.19	53.50	44	1.63	1.50	56.00	3308
50	61.75	4.32	55.50	44	1.88	1.75	58.25	3643
52	64.00	4.50	57.50	44	1.88	1.75	60.50	4087
54	66.25	4.69	59.50	44	1.88	1.75	62.75	4574
56	68.75	4.82	62.00	48	1.88	1.75	65.00	5058
58	71.00	5.00	64.00	48	1.88	1.75	67.25	5607
60	73.00	5.13	66.00	52	1.88	1.75	69.25	6075

** Dimensions conform to ASTM A/SA-105; ASME B16.47 Series A*