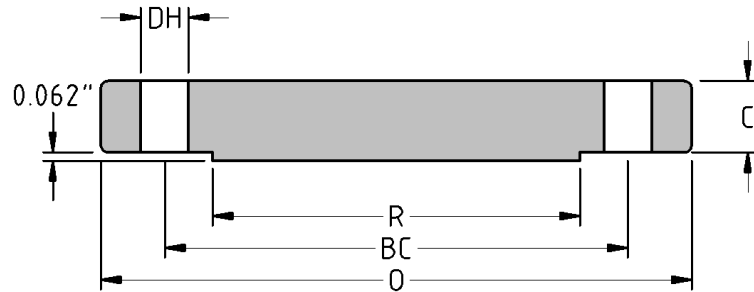




Blind Flange
CLASS 150
Inches / Pounds



Nominal Pipe Size	Outside Diam. of Flange (O)	Thick. of Flange (C)	Diam. of Raised Face (R)	No. of Holes	Diam. of Holes (DH)	Diam. of Bolts	Diam. of Bolt Circle (BC)	Approx. Weight (in Pounds)
1/2	3.50	0.38	1.38	4	0.62	0.50	2.38	1
3/4	3.88	0.44	1.69	4	0.62	0.50	2.75	2
1	4.25	0.5	2.00	4	0.62	0.50	3.12	2
1 1/4	4.62	0.56	2.50	4	0.62	0.50	3.50	3
1 1/2	5.00	0.63	2.88	4	0.62	0.50	3.88	4
2	6.00	0.69	3.62	4	0.75	0.62	4.75	5
2 1/2	7.00	0.82	4.12	4	0.75	0.62	5.50	7
3	7.50	0.88	5.00	4	0.75	0.62	6.00	9
3 1/2	8.50	0.88	5.50	8	0.75	0.62	7.00	13
4	9.00	0.88	6.19	8	0.75	0.62	7.50	17
5	10.00	0.88	7.31	8	0.88	0.75	8.50	20
6	11.00	0.94	8.50	8	0.88	0.75	9.50	26
8	13.50	1.06	10.62	8	0.88	0.75	11.75	45
10	16.00	1.13	12.75	12	1.00	0.88	14.25	70
12	19.00	1.19	15.00	12	1.00	0.88	17.00	110
14	21.00	1.32	16.25	12	1.12	1.00	18.75	140
16	23.50	1.38	18.50	16	1.12	1.00	21.25	180
18	25.00	1.5	21.00	16	1.25	1.12	22.75	220
20	27.50	1.63	23.00	20	1.25	1.12	25.00	285
22	29.50	1.82	25.25	20	1.38	1.25	27.25	355
24	32.00	1.88	27.25	20	1.38	1.25	29.50	430

** Dimensions conform to ASTM A/SA-105; ASME B16.5*