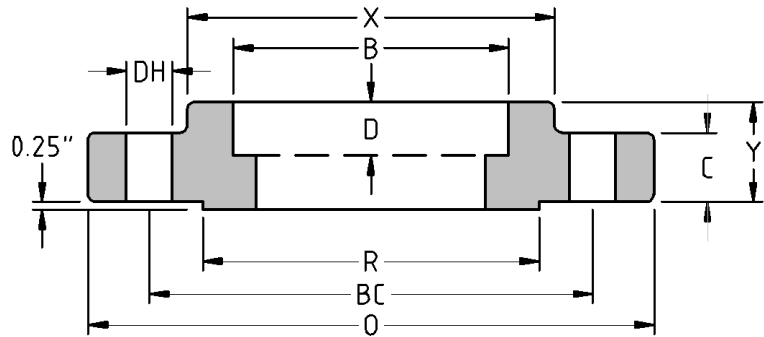




Socket Weld Flange  
**CLASS 1500**  
Inches / Pounds



Nominal Pipe Size	Outside Diam. of Flange (O)	Thick. of Flange (C)	Diam. of Raised Face (R)	Diam. of Hub at Base (X)	Length thru Hub (Y)	Diam. of Bore (B)	Depth of Socket (D)	No. of Holes	Diam. of Holes (DH)	Diam. of Bolts	Diam. of Bolt Circle (BC)	Approx. Weight (in Pounds)
1/2	4.75	0.88	1.38	1.50	1.25	0.88	0.38	4	0.88	0.75	3.25	4
3/4	5.12	1.00	1.69	1.75	1.38	1.09	0.44	4	0.88	0.75	3.50	5
1	5.88	1.12	2.00	2.06	1.62	1.36	0.50	4	1.00	0.88	4.00	8
1 1/4	6.25	1.12	2.50	2.50	1.62	1.70	0.56	4	1.00	0.88	4.38	9
1 1/2	7.00	1.25	2.88	2.75	1.75	1.95	0.62	4	1.12	1.00	4.88	12
2	8.50	1.50	3.62	4.12	2.25	2.44	0.69	8	1.00	0.88	6.50	25
2 1/2	9.62	1.62	4.12	4.88	2.50	2.94	0.75	8	1.12	1.00	7.50	36
3	10.50	1.88	5.00	5.25	2.88	—	—	8	1.25	1.12	8.00	48
4	12.25	2.12	6.19	6.38	3.56	—	—	8	1.38	1.25	9.50	73
5	14.75	2.88	7.31	7.75	4.12	—	—	8	1.62	1.50	11.50	130
6	15.50	3.25	8.50	9.00	4.69	—	—	12	1.50	1.38	12.50	165
8	19.00	3.62	10.62	11.50	5.62	—	—	12	1.75	1.62	15.50	260
10	23.00	4.25	12.75	14.50	6.25	—	—	12	2.00	1.88	19.00	435
12	26.50	4.88	15.00	17.75	7.12	—	—	16	2.12	2.00	22.50	580
14	29.50	5.25	16.25	19.50	—	—	—	16	2.38	2.25	25.00	—
16	32.50	5.75	18.50	21.75	—	—	—	16	2.62	2.50	27.75	—
18	36.00	6.38	21.00	23.50	—	—	—	16	2.88	2.75	30.50	—
20	38.75	7.00	23.00	25.25	—	—	—	16	3.12	3.00	32.75	—
24	46.00	8.00	27.25	30.00	—	—	—	16	3.62	3.50	39.00	—

*\* Dimensions conform to ASTM A/SA-105N; ASME B16.5*