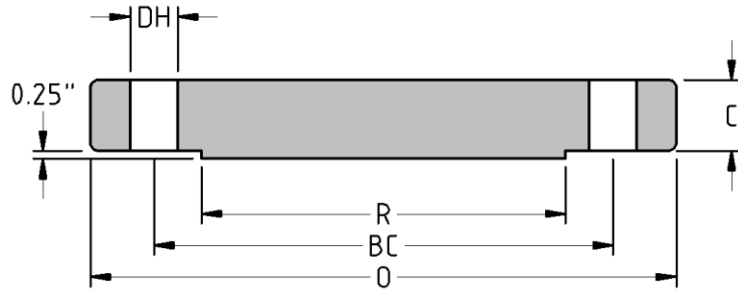




Blind Flange
CLASS 1500
Inches / Pounds



Nominal Pipe Size	Outside Diam. of Flange (O)	Thick. of Flange (C)	Diam. of Raised Face (R)	No. of Holes	Diam. of Holes (DH)	Diam. of Bolts	Diam. of Bolt Circle (BC)	Approx. Weight (in Pounds)
1/2	4.75	0.88	1.38	4	0.88	0.75	3.25	4
3/4	5.12	1.00	1.69	4	0.88	0.75	3.50	6
1	5.88	1.12	2.00	4	1.00	0.88	4.00	8
1 1/4	6.25	1.12	2.50	4	1.00	0.88	4.38	9
1 1/2	7.00	1.25	2.88	4	1.12	1.00	4.88	13
2	8.50	1.50	3.62	8	1.00	0.88	6.50	25
2 1/2	9.62	1.62	4.12	8	1.12	1.00	7.50	35
3	10.50	1.88	5.00	8	1.25	1.12	8.00	48
4	12.25	2.12	6.19	8	1.38	1.25	9.50	73
5	14.75	2.88	7.31	8	1.62	1.50	11.50	140
6	15.50	3.25	8.50	12	1.50	1.38	12.50	160
8	19.00	3.62	10.62	12	1.75	1.62	15.50	300
10	23.00	4.25	12.75	12	2.00	1.88	19.00	510
12	26.50	4.88	15.00	16	2.12	2.00	22.50	690
14	29.50	5.25	16.25	16	2.38	2.25	25.00	975
16	32.50	5.75	18.50	16	2.62	2.50	27.75	1300
18	36.00	6.38	21.00	16	2.88	2.75	30.50	1750
20	38.75	7.00	23.00	16	3.12	3.00	32.75	2225
24	46.00	8.00	27.25	16	3.62	3.50	39.00	3625

** Dimensions conform to ASTM A/SA-105N; ASME B16.5*