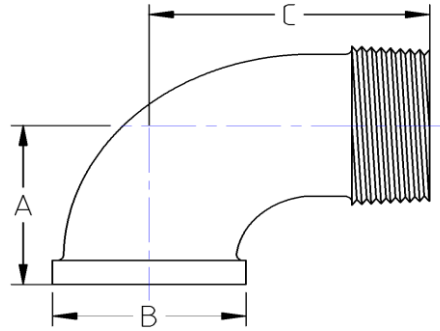




Street 90° Elbow
150# Malleable Iron
Inches / Pounds



Nominal Pipe Size	Center to End (A)	Outside Diameter (B)	Center to End (C)	Nominal Metal Thickness	Approx. Weight (in Pounds)
1/8	0.69	0.69	1.00	0.09	0.06
1/4	0.81	0.84	1.19	0.09	0.10
3/8	0.95	1.01	1.44	0.10	0.17
1/2	1.12	1.2	1.61	0.10	0.25
3/4	1.30	1.46	1.89	0.12	0.40
1	1.50	1.77	2.13	0.13	0.65
1 1/4	1.75	2.15	2.44	0.14	1.08
1 1/2	1.94	2.43	2.67	0.15	1.46
2	2.25	2.96	3.27	0.17	2.34
2 1/2	2.70	3.59	3.86	0.21	4.11
3	3.08	4.28	4.51	0.23	6.59
4	3.79	5.40	5.69	0.25	10.9
6	5.13	6.58	8.03	0.34	23.2

- *Malleable Castings conform to ASTM A197***
- *Hot-Dipped Galvanized Fittings conform to ASTM A153***
- *Malleable Fitting Dimensions conform to ASME B16.3***
- *Malleable Bushings, Plugs and Locknuts conform to ASME B16.14***
- *Malleable Unions conform to ASME B16.39***
- *NPT Threads on all fittings conform to ASME B1.20.1***