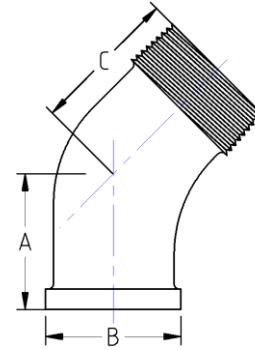




Street 45° Elbow
150# Malleable Iron
Inches / Pounds



Nominal Pipe Size	Center to End (A)	Outside Diameter (B)	Center to End (C)	Nominal Metal Thickness	Approx. Weight (in Pounds)
1/8	0.63	0.69	0.83	0.09	0.06
1/4	0.73	0.84	0.94	0.09	0.10
3/8	0.80	1.01	1.03	0.10	0.12
1/2	0.88	1.20	1.15	0.10	0.22
3/4	0.98	1.46	1.29	0.12	0.34
1	1.12	1.77	1.47	0.13	0.54
1 1/4	1.29	2.15	1.71	0.14	0.85
1 1/2	1.43	2.43	1.88	0.15	1.21
2	1.68	2.96	2.22	0.17	1.95
2 1/2	1.95	3.59	2.57	0.21	2.65
3	2.17	4.28	3.00	0.23	4.36
4	2.61	5.40	3.70	0.25	7.00

***Malleable Castings conform to ASTM A197**

***Hot-Dipped Galvanized Fittings conform to ASTM A153**

***Malleable Fitting Dimensions conform to ASME B16.3**

***Malleable Bushings, Plugs and Locknuts conform to ASME B16.14**

***Malleable Unions conform to ASME B16.39**

***NPT Threads on all fittings conform to ASME B1.20.1**