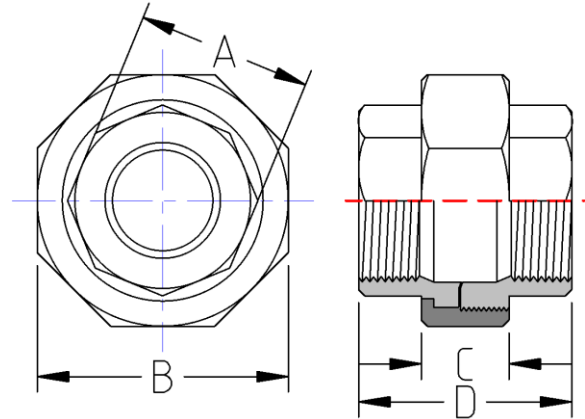




Threaded Union Std Pattern
150# Cast Stainless Steel
Inches / Pounds



Nominal Pipe Size	Width Across Flats (A)	Width Across Flats (B)	Length of Nut (C)	End to End (D)	Approx. Weight (in Pounds)
1/8"	0.51	0.98	0.51	1.06	0.10
1/4"	0.69	1.20	0.53	1.22	0.17
3/8"	0.83	1.34	0.63	1.34	0.24
1/2"	1.00	1.48	0.65	1.50	0.29
3/4"	1.24	1.83	0.73	1.52	0.46
1"	1.52	2.07	0.75	1.87	0.62
1-1/4"	1.87	2.54	0.87	2.11	0.93
1-1/2"	2.15	2.78	0.93	2.24	1.10
2"	2.64	3.50	1.02	2.55	2.2
2-1/2"	3.15	4.27	1.10	2.81	3.3
3"	3.85	4.67	1.22	3.27	3.9
4"	4.79	5.81	1.34	3.39	5.9

****The material composition and quality comply with ASTM A351/A351M "Standard Specification for Castings, Austenitic, for Pressure-Containing Parts"***

****NPT Threads on all fittings conform to ASME B1.20.1***