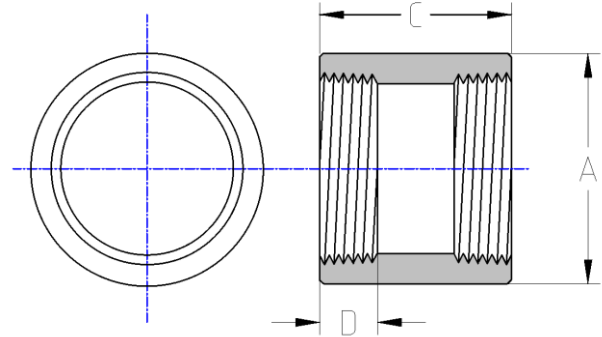




Threaded Full Coupling
Std Pattern
150# Cast Stainless Steel
Inches / Pounds



Nominal Pipe Size	Outside Diameter (A)	End to End (C)	Internal Thread Length (D)	Approx. Weight (in Pounds)
1/8"	0.55	1.00	0.31	0.05
1/4"	0.73	1.00	0.39	0.09
3/8"	0.85	1.12	0.43	0.12
1/2"	1.05	1.38	0.57	0.24
3/4"	1.25	1.50	0.59	0.32
1"	1.56	1.62	0.67	0.51
1-1/4"	1.91	2.00	0.83	0.78
1-1/2"	2.17	2.12	0.83	0.99
2"	2.62	2.50	0.94	1.51
2-1/2"	3.33	2.87	1.18	3.2
3"	3.96	3.18	1.22	4.3
4"	5.10	3.68	1.42	7.7

****The material composition and quality comply with ASTM A351/A351M "Standard Specification for Castings, Austenitic, for Pressure-Containing Parts"***

****NPT Threads on all fittings conform to ASME B1.20.1***