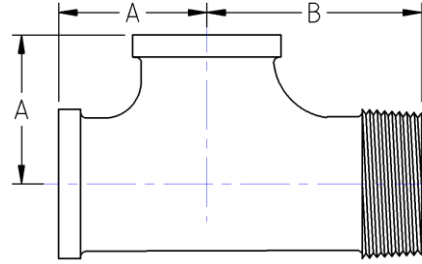




Service Tee
150# Malleable Iron
Inches / Pounds



Nominal Pipe Size	Center to Female End A	Center to Male End B	Nominal Metal Thickness	Approximate Weight (in Pounds)
3/8	0.95	1.44	0.10	0.23
1/2	1.12	1.63	0.10	0.36
3/4	1.31	1.89	0.12	0.56
1	1.50	2.14	0.13	0.90
1 1/4	1.75	2.45	0.14	1.34
1 1/2	1.94	2.69	0.15	1.93
2	2.25	3.26	0.17	3.16

- *Malleable Castings conform to ASTM A197**
- *Hot-Dipped Galvanized Fittings conform to ASTM A153**
- *Malleable Fitting Dimensions conform to ASME B16.3**
- *Malleable Bushings, Plugs and Locknuts conform to ASME B16.14**
- *Malleable Unions conform to ASME B16.39**
- *NPT Threads on all fittings conform to ASME B1.20.1**