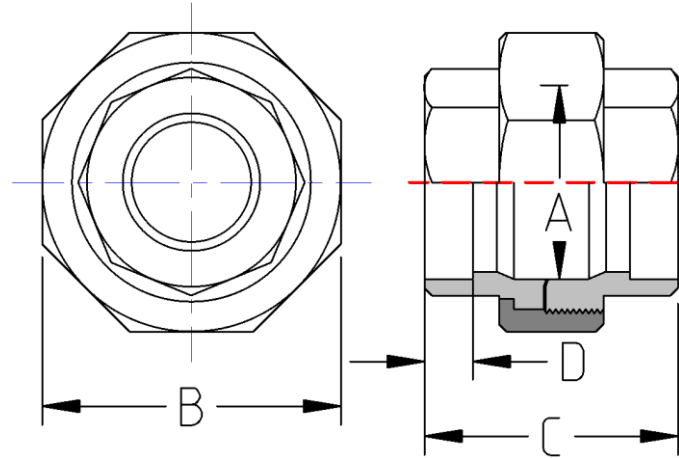




Socket Weld Union
MSS SP-114 Pattern
150# Cast Stainless Steel
Inches / Pounds



Nominal Pipe Size	Bore Diameter (A)	Width Across Flats (B)	End to End (C)	Socket Weld Depth Min. (D)	Nominal Metal Thickness**	Approx. Weight (in Pounds)
1/8"	0.406	1.047	1.272	0.32	0.09	0.17
1/4"	0.535	1.165	1.449	0.32	0.09	0.21
3/8"	0.689	1.378	1.622	0.32	0.10	0.32
1/2"	0.835	1.496	1.736	0.32	0.10	0.40
3/4"	1.047	1.772	1.969	0.37	0.12	0.67
1"	1.307	2.150	2.091	0.44	0.13	0.99
1-1/4"	1.654	2.646	2.272	0.50	0.14	1.62
1-1/2"	1.890	2.976	2.421	0.50	0.15	2.09
2"	2.362	3.445	2.756	0.56	0.17	2.66
2-1/2"	2.862	4.157	3.236	0.56	0.21	4.74
3"	3.488	4.984	3.516	0.56	0.23	6.82
4"	4.488	6.228	3.878	0.69	0.26	10.84

****The material composition and quality comply with ASTM A351/A351M "Standard Specification for Castings, Austenitic, for Pressure-Containing Parts"***

****Dimensions comply with MSS SP-114***

***** Patterns shall be designed to produce castings of metal thickness given in table. Metal thickness at no point shall be less than 90% of the nominal metal thickness value.***