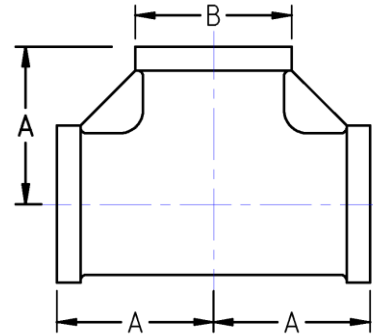




Socket Weld Tee  
MSS SP-114 Pattern  
**150# Cast Stainless Steel**  
Inches / Pounds



Nominal Pipe Size	Center to End (A)	Outside Diameter (B)	Socket Weld Depth Min.	Nominal Metal Thickness**	Approx. Weight (in Pounds)
1/8"	0.81	0.75	0.32	0.09	0.16
1/4"	0.81	0.84	0.32	0.09	0.16
3/8"	0.93	1.01	0.32	0.10	0.29
1/2"	1.12	1.20	0.32	0.10	0.33
3/4"	1.31	1.46	0.37	0.12	0.55
1"	1.50	1.77	0.44	0.13	0.83
1-1/4"	1.75	2.15	0.50	0.14	1.27
1-1/2"	1.93	2.43	0.50	0.15	1.67
2"	2.25	2.96	0.56	0.17	2.59
2-1/2"	2.68	3.31	0.56	0.21	3.80
3"	3.06	4.00	0.56	0.23	5.65
4"	3.81	5.06	0.69	0.26	10.40

***\*The material composition and quality comply with ASTM A351/A351M "Standard Specification for Castings, Austenitic, for Pressure-Containing Parts"***

***\*Dimensions comply with MSS SP-114***

***\*\* Patterns shall be designed to produce castings of metal thickness given in table. Metal thickness at no point shall be less than 90% of the nominal metal thickness value.***