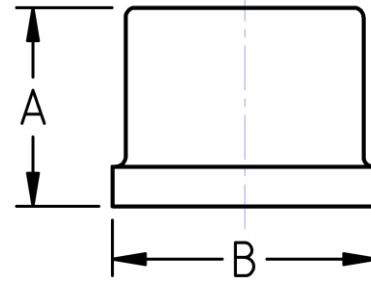




Socket Weld Cap
MSS SP-114 Pattern
150# Cast Stainless Steel
Inches / Pounds



Nominal Pipe Size	End to End (A)	Outside Diameter (B)	Socket Weld Depth Min.	Nominal Metal Thickness**	Approx. Weight (in Pounds)
1/8"	0.69	0.75	0.32	0.09	0.04
1/4"	0.69	0.84	0.32	0.09	0.06
3/8"	0.82	1.02	0.32	0.10	0.07
1/2"	0.94	1.21	0.32	0.10	0.14
3/4"	1.07	1.46	0.37	0.12	0.21
1"	1.32	1.77	0.44	0.13	0.37
1-1/4"	1.63	2.15	0.50	0.14	0.62
1-1/2"	1.63	2.43	0.50	0.15	0.79
2"	1.76	2.96	0.56	0.17	1.20
2-1/2"	2.01	3.31	0.56	0.21	1.74
3"	2.26	4.00	0.56	0.23	2.86
4"	2.53	5.06	0.69	0.26	5.16

****The material composition and quality comply with ASTM A351/A351M "Standard Specification for Castings, Austenitic, for Pressure-Containing Parts"***

****Dimensions comply with MSS SP-114***

***** Patterns shall be designed to produce castings of metal thickness given in table. Metal thickness at no point shall be less than 90% of the nominal metal thickness value.***