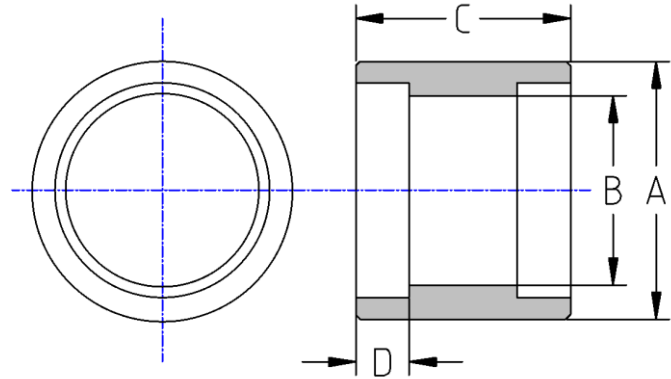




Socket Weld Full Coupling
MSS SP-114 Pattern
150# Cast Stainless Steel
Inches / Pounds



Nominal Pipe Size	Outside Diameter Min. (A)	Inside Diameter (B)	End to End (C)	Socket Weld Depth Min. (D)	Nominal Metal Thickness**	Approx. Weight (in Pounds)
1/8"	0.75	0.327	1.01	0.32	0.09	0.10
1/4"	0.85	0.425	1.01	0.32	0.09	0.11
3/8"	1.02	0.551	1.13	0.32	0.10	0.16
1/2"	1.21	0.677	1.40	0.32	0.10	0.27
3/4"	1.47	0.870	1.52	0.37	0.12	0.41
1"	1.78	1.106	1.63	0.44	0.13	0.59
1-1/4"	2.16	1.457	2.01	0.50	0.14	0.98
1-1/2"	2.44	1.693	2.13	0.50	0.15	1.26
2"	2.97	2.161	2.52	0.56	0.17	2.00
2-1/2"	3.27	2.555	2.89	0.56	0.21	2.33
3"	4.01	3.181	3.20	0.56	0.23	3.53
4"	5.09	4.169	3.70	0.69	0.26	6.11

****The material composition and quality comply with ASTM A351/A351M "Standard Specification for Castings, Austenitic, for Pressure-Containing Parts"***

****NPT Threads on all fittings conform to ASME B1.20.1***

****Dimensions comply with MSS SP-114***

***** Patterns shall be designed to produce castings of metal thickness given in table. Metal thickness at no point shall be less than 90% of the nominal metal thickness value.***