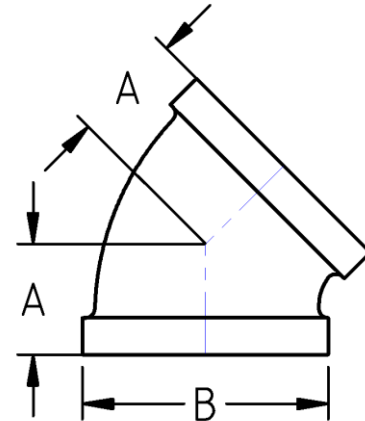




Socket Weld 45° Elbow
MSS SP-114 Pattern
150# Cast Stainless Steel
Inches / Pounds



Nominal Pipe Size	Center to End (A)	Outside Diameter (B)	Socket Weld Depth Min.	Nominal Metal Thickness**	Approx. Weight (in Pounds)
1/8"	0.69	0.75	0.32	0.09	0.10
1/4"	0.69	0.84	0.32	0.09	0.11
3/8"	0.81	1.01	0.32	0.10	0.17
1/2"	0.87	1.20	0.32	0.10	0.19
3/4"	1.00	1.46	0.37	0.12	0.34
1"	1.12	1.77	0.44	0.13	0.52
1-1/4"	1.31	2.15	0.50	0.14	0.82
1-1/2"	1.43	2.43	0.50	0.15	1.07
2"	1.68	2.96	0.56	0.17	1.61
2-1/2"	1.93	3.31	0.56	0.21	2.34
3"	2.18	4.00	0.56	0.23	3.60
4"	2.62	5.06	0.69	0.26	6.43

****The material composition and quality comply with ASTM A351/A351M "Standard Specification for Castings, Austenitic, for Pressure-Containing Parts"***

****Dimensions comply with MSS SP-114***

***** Patterns shall be designed to produce castings of metal thickness given in table. Metal thickness at no point shall be less than 90% of the nominal metal thickness value.***