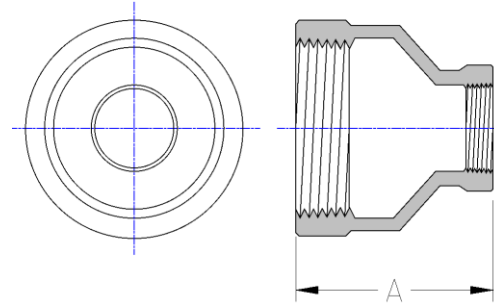




Reducing Coupling  
**150# Malleable Iron**  
Inches / Pounds



Size	A	Approximate Weight (in Pounds)
1/4 x 1/8	1.00	0.07
3/8 x 1/8	1.13	0.11
3/8 x 1/4	1.13	0.11
1/2 x 1/8	1.25	0.14
1/2 x 1/4	1.25	0.15
1/2 x 3/8	1.25	0.16
3/4 x 1/8	1.44	0.24
3/4 x 1/4	1.44	0.22
3/4 x 3/8	1.44	0.25
3/4 x 1/2	1.44	0.26
1 x 1/4	1.69	0.35
1 x 3/8	1.69	0.35
1 x 1/2	1.69	0.39
1 x 3/4	1.69	0.42
1 1/4 x 3/8	2.06	0.54
1 1/4 x 1/2	2.06	0.60
1 1/4 x 3/4	2.06	0.64
1 1/4 x 1	2.06	0.68
1 1/2 x 3/8	2.31	0.68
1 1/2 x 1/2	2.31	0.77
1 1/2 x 3/4	2.31	0.88
1 1/2 x 1	2.31	0.90
1 1/2 x 1 1/4	2.31	0.90
2 x 1/2	2.81	1.15
2 x 3/4	2.81	1.34
2 x 1	2.81	1.40
2 x 1 1/4	2.81	1.53
2 x 1 1/2	2.81	1.55
2 1/2 x 1/2	3.25	1.66
2 1/2 x 3/4	3.25	1.64
2 1/2 x 1	3.25	1.84



Size	A	Approximate Weight (in Pounds)
2½ x 1¼	3.25	2.00
2½ x 1½	3.25	2.09
2½ x 2	3.25	2.50
3 x ½	3.69	2.48
3 x ¾	3.69	2.26
3 x 1	3.69	3.16
3 x 1¼	3.69	3.22
3 x 1½	3.69	3.30
3 x 2	3.69	3.23
3 x 2½	3.69	3.31
4 x ½	4.38	3.36
4 x ¾	4.38	2.98
4 x 1	4.38	3.56
4 x 1¼	4.38	3.70
4 x 1½	4.38	4.20
4 x 2	4.38	5.10
4 x 2½	4.38	5.93
4 x 3	4.38	6.55
5 x 2	4.56	5.60
5 x 2½	4.56	5.90
5 x 3	4.56	5.30
5 x 4	4.56	8.20
6 x 2	4.25	8.08
6 x 2½	4.25	7.92
6 x 3	4.25	7.34
6 x 4	4.81	8.76
6 x 5	4.25	8.50
8 x 6	5.20	16.80

- \*Malleable Castings conform to ASTM A197***
- \*Hot-Dipped Galvanized Fittings conform to ASTM A153***
- \*Malleable Fitting Dimensions conform to ASME B16.3***
- \*Malleable Bushings, Plugs and Locknuts conform to ASME B16.14***
- \*Malleable Unions conform to ASME B16.39***
- \*NPT Threads on all fittings conform to ASME B1.20.1***